



Food and Agriculture
Organization of the
United Nations



International
Plant Protection
Convention



INTERNATIONAL YEAR OF
PLANT HEALTH

2020

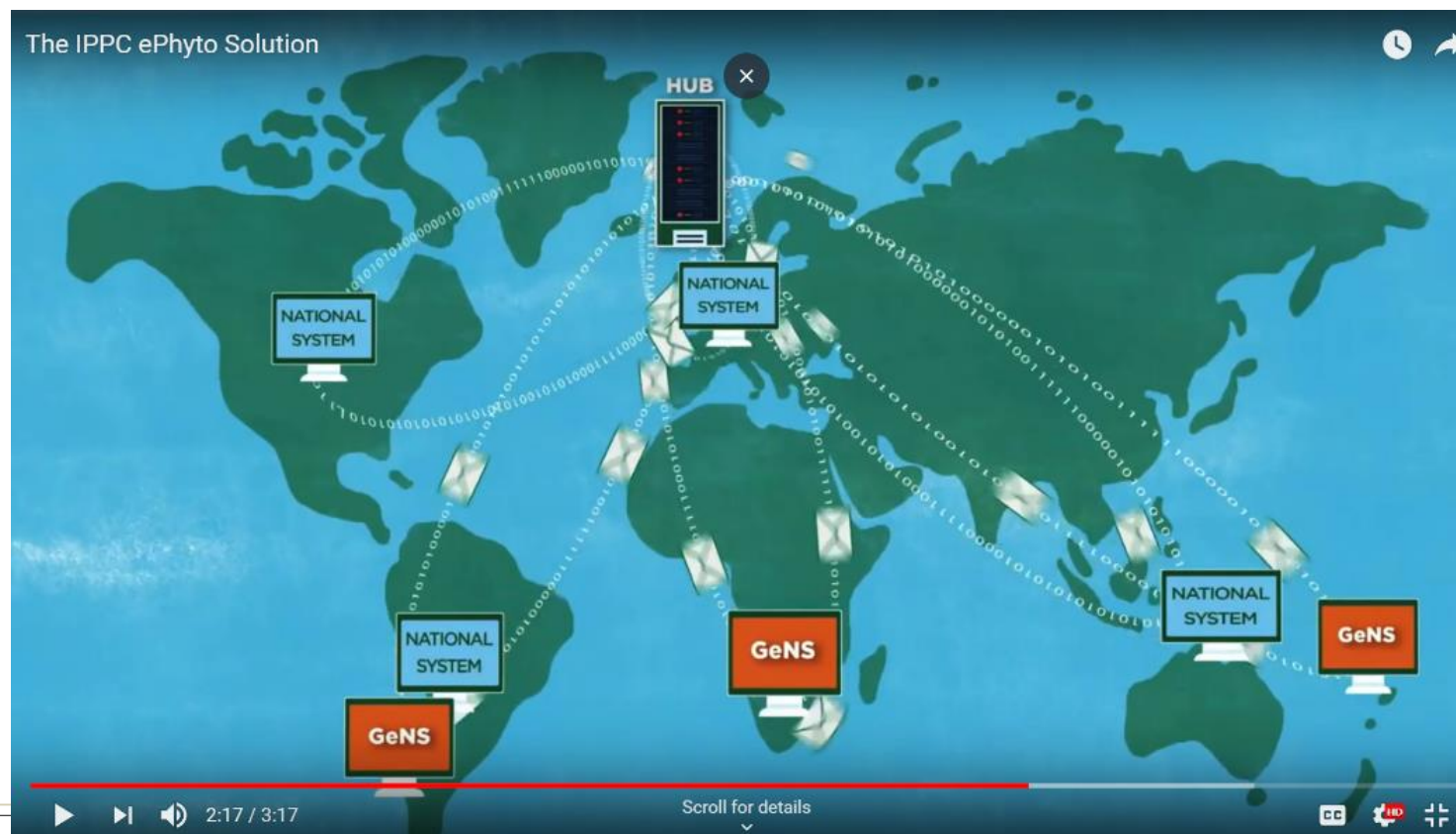
PROTECTING PLANTS,
PROTECTING LIFE

MISE À JOUR ET ETAT DE ePHYTO

Secrétariat de la CIPV
Ateliers régionaux 2020

Vue d'ensemble de ePhyto en 3 minutes

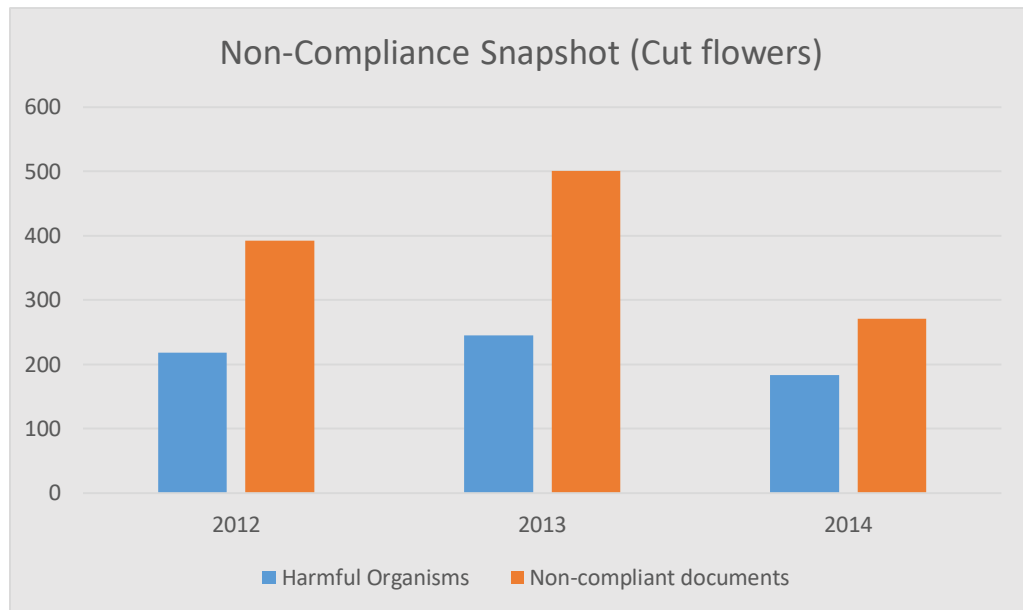
Cette vidéo montre la dynamique de la solution ePhyto et les avantages qu'elle présente pour les organisations nationales de protection des végétaux (ONPV) et l'industrie.



2 of 15



Pourquoi ePhyto?



Une enquête de 3 ans a montré que les documents non conformes déclenchent un nombre plus élevé de rejets d'importations que les problèmes phytosanitaires réels (organismes nuisibles)

- Réduit les certificats non conformes = Plus de rejets de travail papier que de découvertes de ravageurs.
- Élimine les processus papier inefficaces = main-d'œuvre intensive.
- Réduit la réémission de certificats phytosanitaires papier = coût énorme en temps et en argent avec le papier.
- Perte de marchandises en attente de dédouanement.
- Réduit les réclamations de l'industrie pour les livraisons tardives ou la mauvaise qualité.
- Amélioration de la sécurité
- ePhyto protège le commerce légitime.
 - ❖ Certificats frauduleux
 - ❖ Introduction de ravageurs





La solution ePhyto



Hub

System to
facilitate
exchange of
ePhytos
between
NPPOs
(via national
systems or the
GeNS)

GeNS

Generic ePhyto National System

Centralized web-
based system to
allow countries
without their own
systems to
produce, send
and receive
ePhytos through
the hub

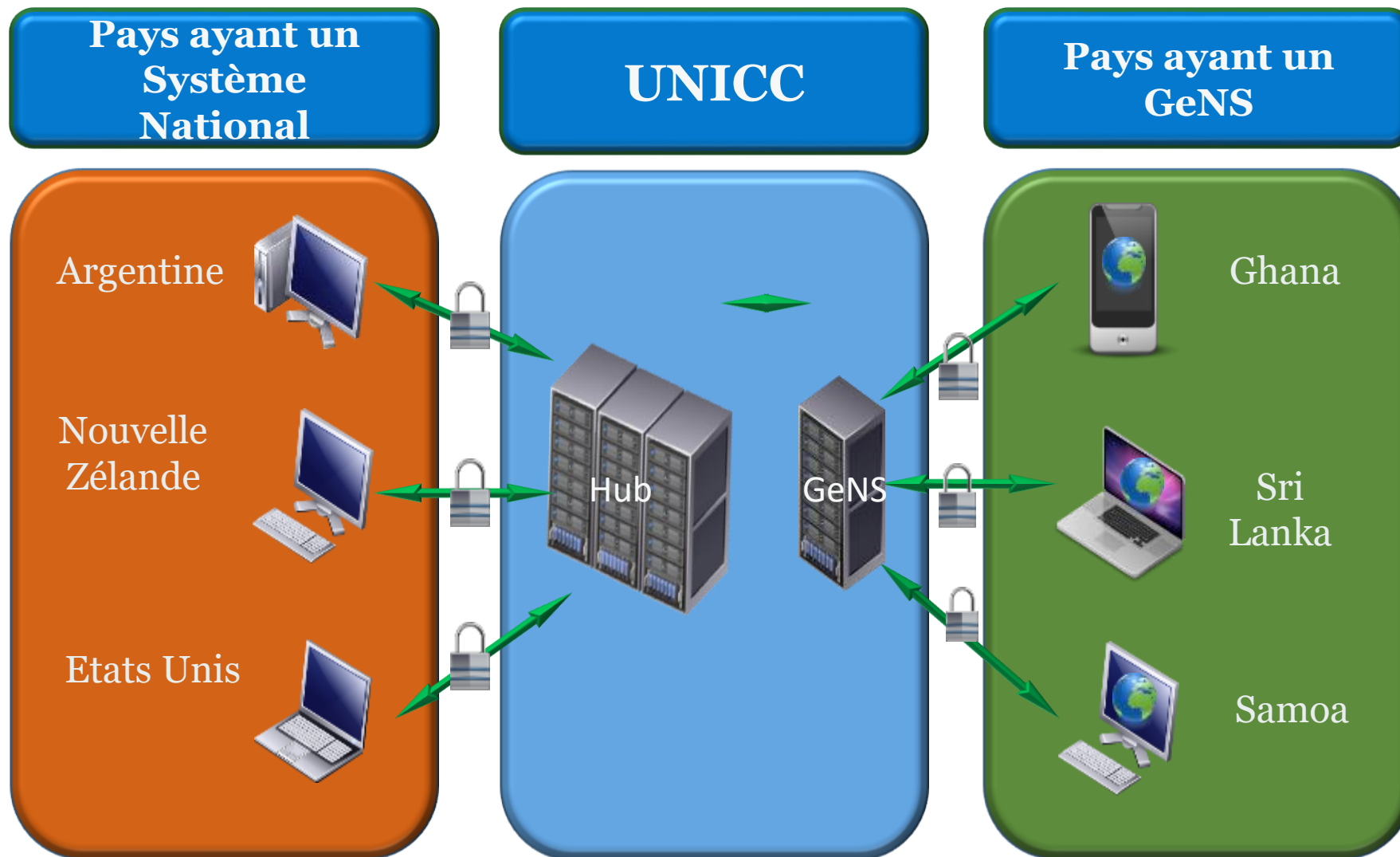
Harmonized message

Uniform format,
structure and
accompanying
codes and lists
where applicable





ePhyto solution





SPS Certificate `<xml:ns="urn:un:unece:uncefact:data:standard:SPSCertificate:17" xmlns:un="urn:un:unece:uncefact:data:standard:UnqualifiedDataTypes:21" xmlns:xsi="http://www.w3.org/2001/XMLSchema-instance" encoding="UTF-8" standalone="true">`

```

<SPSExchangedDocument>
  <ram:Name>NULL</ram:Name>
  <ram:ID>779068</ram:ID>
  <ram:TypeCode>851</ram:TypeCode>
  <ram:StatusCode>70</ram:StatusCode>
  <ram:IssueDateTime>
    <ns1:DateTimeString>2018-04-10T10:54:44-03:00</ns1:DateTimeString>
  </ram:IssueDateTime>
  <ram:IssuerSPSParty>
    <ram:Name>Servicio Nacional de Sanidad y Calidad Agroalimentaria</ram:Name>
    <ram:IncludedSPSNote>
      <ram:Subject>SPSFL</ram:Subject>
      <ram:ContentCode>5</ram:ContentCode>
    </ram:IncludedSPSNote>
    <ram:SignatorySPSAuthentication>
      <ns1:DateTimeString>NULL</ns1:DateTimeString>
    </ram:SignatorySPSAuthentication>
  </ram:IssuerSPSParty>
  <ram:SpecifiedSPSAddress>
    <ram:Name>PUERTO DE BUENOS AIRES (CIUDAD AUTONOMA DE BUENOS AIRES)</ram:Name>
    <ram:IncludedSPSClause>
      <ram:ProviderSPSParty>
        <ram:Name>NULL</ram:Name>
        <ram:SpecifiedSPSPerson>
          <ram:Name>AR - BS BUIGUES GUSTAVO</ram:Name>
          <ram:ProviderSPSParty>
            <ram:IncludedSPSClause>
              <ram:SignatorySPSAuthentication>
                <ns1:DateTimeString>NULL</ns1:DateTimeString>
              </ram:SignatorySPSAuthentication>
            </ram:IncludedSPSClause>
          </ram:ProviderSPSParty>
        </ram:SpecifiedSPSPerson>
      </ram:IncludedSPSClause>
    </ram:IncludedSPSClause>
  </ram:SpecifiedSPSAddress>
  <ram:Consignment>
    <ram:ConsignorSPSParty>
      <ram:Name>CAMPO GRANDE S A</ram:Name>
      <ram:SpecifiedSPSAddress>
        <ram:LineOne>2022421, PEDREGAL (5529), MENDOZA, ARGENTINA</ram:LineOne>
      </ram:SpecifiedSPSAddress>
    </ram:ConsignorSPSParty>
    <ram:ConsigneeSPSParty>
      <ram:Name>PAPAYA FRUIT GRONT SALG OG BANANMODNING I/S</ram:Name>
      <ram:SpecifiedSPSAddress>
        <ram:LineOne>GRONLØKKEVEJ 10 - 5000 ODENSE C P.IVA DK 32 86 72 78</ram:LineOne>
      </ram:SpecifiedSPSAddress>
    </ram:ConsigneeSPSParty>
    <ram:ExportSPSCountry>
      <ram:ID>AR</ram:ID>
      <ram:Name>NULL</ram:Name>
    </ram:ExportSPSCountry>
    <ram:ImportSPSCountry>
      <ram:ID>US</ram:ID>
      <ram:Name>NULL</ram:Name>
    </ram:ImportSPSCountry>
    <ram:UnloadingBaseportsPSLocation>
      <ram:Name>NEW YORK</ram:Name>
    </ram:UnloadingBaseportsPSLocation>
    <ram:ExaminationSPSEvent>
      <ram:OccurrencePSLocation>
        <ram:Name>NULL</ram:Name>
      </ram:OccurrencePSLocation>
    </ram:ExaminationSPSEvent>
    <ram>MainCarriageSPSTransportMovement>
      <ram:ModeCode>1</ram:ModeCode>
      <ram:UsedSPSTransportMeans>
        <ram:Name>Container ship</ram:Name>
      </ram:UsedSPSTransportMeans>
    </ram>MainCarriageSPSTransportMovement>
    <ram>IncludedSPSConsignmentItem>
      <ram:SequenceNumeric>0</ram:SequenceNumeric>
      <ram>Description languageID="en">Fresh Garlic</ram>Description>
      <ram:CommonName languageID="en">garlic</ram:CommonName>
      <ram:NetWeightMeasure unitCode="KGM">40.0000</ram:NetWeightMeasure>
      <ram:AdditionalInformationSPSNote>
        <ram:Subject>DMTLL</ram:Subject>
        <ram:Content>CAMPO GRANDE</ram:Content>
      </ram:AdditionalInformationSPSNote>
      <ram:AdditionalInformationSPSNote>
        <ram:Subject>ADTLL</ram:Subject>
        <ram:Content languageID="en">No additional declarations</ram:Content>
      </ram:AdditionalInformationSPSNote>
      <ram:AdditionalInformationSPSNote>
        <ram:Subject>ADTLL</ram:Subject>
        <ram:Content>2018-01-23T00:00:00-0300</ram:Content>
      </ram:AdditionalInformationSPSNote>
      <ram:ApplicableSPSCClassification>
        <ram:SystemName>IPPCPCVP</ram:SystemName>
        <ram:ClassName languageID="en">Bulbs</ram:ClassName>
      </ram:ApplicableSPSCClassification>
      <ram:ApplicableSPSCClassification>
        <ram:SystemName>IPPCPC</ram:SystemName>
        <ram:ClassName languageID="en">Fresh</ram:ClassName>
      </ram:ApplicableSPSCClassification>
      <ram:ApplicableSPSCClassification>
        <ram:SystemName>IPPCPCIOU</ram:SystemName>
        <ram:ClassName languageID="en">Consumption</ram:ClassName>
      </ram:ApplicableSPSCClassification>
      <ram:ApplicableSPSCClassification>
        <ram:SystemName>BN</ram:SystemName>
        <ram:ClassName>Allium sativum</ram:ClassName>
      </ram:ApplicableSPSCClassification>
      <ram:PhysicalSPSPackage>
        <ram:LevelCode>1</ram:LevelCode>
        <ram:TypeCode>BX</ram:TypeCode>
        <ram:ItemQuantity>15</ram:ItemQuantity>
      </ram:PhysicalSPSPackage>
      <ram:OriginSPSCountry>
        <ram:ID>AR</ram:ID>
        <ram:Name>NULL</ram:Name>
        <ram:SubordinateSPSCountrySubDivision>
          <ram:Name>MENDOZA</ram:Name>
          <ram:HierarchicalLevelCode>0</ram:HierarchicalLevelCode>
          <ram:SubordinateSPSCountrySubDivision>
            <ram:OriginSPSCountry>
              <ram:IncludedSPSTradeLineItem>
                <ram:IncludedSPSConsignmentItem>
                  <SPSConsignment>
                    <ram:Name>CAMPO GRANDE S A</ram:Name>
                    <ram:SpecifiedSPSAddress>
                      <ram:LineOne>2022421, PEDREGAL (5529), MENDOZA, ARGENTINA</ram:LineOne>
                    </ram:SpecifiedSPSAddress>
                    <ram:Consignment>
                      <ram:ConsignorSPSParty>
                        <ram:Name>CAMPO GRANDE S A</ram:Name>
                        <ram:SpecifiedSPSAddress>
                          <ram:LineOne>2022421, PEDREGAL (5529), MENDOZA, ARGENTINA</ram:LineOne>
                        </ram:SpecifiedSPSAddress>
                      <ram:ConsigneeSPSParty>
                        <ram:Name>PAPAYA FRUIT GRONT SALG OG BANANMODNING I/S</ram:Name>
                        <ram:SpecifiedSPSAddress>
                          <ram:LineOne>GRONLØKKEVEJ 10 - 5000 ODENSE C P.IVA DK 32 86 72 78</ram:LineOne>
                        </ram:SpecifiedSPSAddress>
                      <ram:ExportSPSCountry>
                        <ram:ID>AR</ram:ID>
                        <ram:Name>NULL</ram:Name>
                      </ram:ExportSPSCountry>
                      <ram:ImportSPSCountry>
                        <ram:ID>US</ram:ID>
                        <ram:Name>NULL</ram:Name>
                      </ram:ImportSPSCountry>
                      <ram:UnloadingBaseportsPSLocation>
                        <ram:Name>NEW YORK</ram:Name>
                      </ram:UnloadingBaseportsPSLocation>
                      <ram:ExaminationSPSEvent>
                        <ram:OccurrencePSLocation>
                          <ram:Name>NULL</ram:Name>
                        </ram:OccurrencePSLocation>
                      </ram:ExaminationSPSEvent>
                      <ram>MainCarriageSPSTransportMovement>
                        <ram:ModeCode>1</ram:ModeCode>
                        <ram:UsedSPSTransportMeans>
                          <ram:Name>Container ship</ram:Name>
                        </ram:UsedSPSTransportMeans>
                      </ram>MainCarriageSPSTransportMovement>
                      <ram>IncludedSPSConsignmentItem>
                        <ram:SequenceNumeric>0</ram:SequenceNumeric>
                        <ram>Description languageID="en">Fresh Garlic</ram>Description>
                        <ram:CommonName languageID="en">garlic</ram:CommonName>
                        <ram:NetWeightMeasure unitCode="KGM">40.0000</ram:NetWeightMeasure>
                        <ram:AdditionalInformationSPSNote>
                          <ram:Subject>DMTLL</ram:Subject>
                          <ram:Content>CAMPO GRANDE</ram:Content>
                        </ram:AdditionalInformationSPSNote>
                        <ram:AdditionalInformationSPSNote>
                          <ram:Subject>ADTLL</ram:Subject>
                          <ram:Content languageID="en">No additional declarations</ram:Content>
                        </ram:AdditionalInformationSPSNote>
                        <ram:AdditionalInformationSPSNote>
                          <ram:Subject>ADTLL</ram:Subject>
                          <ram:Content>2018-01-23T00:00:00-0300</ram:Content>
                        </ram:AdditionalInformationSPSNote>
                        <ram:ApplicableSPSCClassification>
                          <ram:SystemName>IPPCPCVP</ram:SystemName>
                          <ram:ClassName languageID="en">Bulbs</ram:ClassName>
                        </ram:ApplicableSPSCClassification>
                        <ram:ApplicableSPSCClassification>
                          <ram:SystemName>IPPCPC</ram:SystemName>
                          <ram:ClassName languageID="en">Fresh</ram:ClassName>
                        </ram:ApplicableSPSCClassification>
                        <ram:ApplicableSPSCClassification>
                          <ram:SystemName>IPPCPCIOU</ram:SystemName>
                          <ram:ClassName languageID="en">Consumption</ram:ClassName>
                        </ram:ApplicableSPSCClassification>
                        <ram:ApplicableSPSCClassification>
                          <ram:SystemName>BN</ram:SystemName>
                          <ram:ClassName>Allium sativum</ram:ClassName>
                        </ram:ApplicableSPSCClassification>
                        <ram:PhysicalSPSPackage>
                          <ram:LevelCode>1</ram:LevelCode>
                          <ram:TypeCode>BX</ram:TypeCode>
                          <ram:ItemQuantity>15</ram:ItemQuantity>
                        </ram:PhysicalSPSPackage>
                        <ram:OriginSPSCountry>
                          <ram:ID>AR</ram:ID>
                          <ram:Name>NULL</ram:Name>
                          <ram:SubordinateSPSCountrySubDivision>
                            <ram:Name>MENDOZA</ram:Name>
                            <ram:HierarchicalLevelCode>0</ram:HierarchicalLevelCode>
                            <ram:SubordinateSPSCountrySubDivision>
                              <ram:OriginSPSCountry>
                                <ram:IncludedSPSTradeLineItem>
                                  <ram:IncludedSPSConsignmentItem>
                                    <SPSConsignment>
                                      <ram:Name>CAMPO GRANDE S A</ram:Name>
                                      <ram:SpecifiedSPSAddress>
                                        <ram:LineOne>2022421, PEDREGAL (5529), MENDOZA, ARGENTINA</ram:LineOne>
                                      </ram:SpecifiedSPSAddress>
                                      <ram:Consignment>
                                        <ram:ConsignorSPSParty>
                                          <ram:Name>CAMPO GRANDE S A</ram:Name>
                                          <ram:SpecifiedSPSAddress>
                                            <ram:LineOne>2022421, PEDREGAL (5529), MENDOZA, ARG
```



NOT a
paper
certificate

NOT a
scanned
certificate



Représentations sur papier



Un certificat phyto Argentine (à partir de leur système)

CERTIFICADO FITOSANITARIO
PHYTOSANITARY CERTIFICATE
N° 779068

DE Organización Nacional de Protección Fitosanitaria de ARGENTINA
FROM: National Plant Protection Organization of ARGENTINA

PAIS: Organización Nacional de Protección Fitosanitaria de ESTADOS UNIDOS
UNITED STATES
TO: The Plant Protection Organization of

DESCRIPCIÓN DEL ENVÍO/ DESCRIPTION OF THE CONSIGNMENT

1 - Nombre y dirección del exportador Name and address of the exporter CAMPO GRANDE S A 2022421, PEDREGAL (5529), MENDOZA, ARGENTINA	2 - Nombre y dirección declarada del destinatario Declared name and address of the consignee PAPAYA FRUIT GROWT SALG OG BANANMODNING I/S GRONLOKKEVEJ 10 - 5000 ODENSE C P.IVA DK 32 86 72 78
3 - Medio de transporte declarado Declared means of conveyance Marítimo - Container ship	4 - Punto de entrada declarado Declared point of entry NEW YORK
5 - Nombre del producto, número y descripción de bultos Name of produce, number and description of packages 15 cajas de Ajo Fresco 15 box of Fresh Garlic	6 - Cantidad declarada Quantity declared 40,0000 kg
7 - Nombre botánico de la planta Botanical name of plant Allium sativum	8 - Lugar de origen Place of origin ARGENTINA - MENDOZA
9 - Marcas distintivas Distinguishing marks CAMPO GRANDE	

10 - Por el presente se certifica que las plantas, productos vegetales u otros artículos reglamentados descritos aquí han sido inspeccionados y/o analizados, de acuerdo con procedimientos oficiales adecuados, y se consideran libres de plagas cuarentenarias especificadas por la contraparte importadora y que cumplen con los requisitos fitosanitarios exigidos por esta. Incluyendo los relativos a plagas no cuarentenarias reglamentadas.
This is to certify that the plants, plants products or other regulated articles described herein have been inspected and/or tested according to appropriate official procedures and are considered to be free from the quarantine pests, specified by the importing contracting party and to conform with the current phytosanitary requirements of the importing contracting party including those for regulated non-quarantine pests.

DECLARACIÓN ADICIONAL/ ADDITIONAL DECLARATION

11 - Sin Declaraciones Adicionales
No additional declarations
Fecha de inspección: 22-enero-2018
Inspection date: 22-january-2018

TRATAMIENTO DE DESINFECCIÓN Y/O DESINFESTACIÓN/ DISINFESTATION AND/OR DISINFESTATION TREATMENT

12 - Tratamiento Treatment	13 - Producto químico y concentración (ingr. activo) Chemical and Concentration (active ingredient)
14 - Duración Duration	15 - Temperatura Temperature
16 - Fecha Date	17 - Información adicional Additional information

DATOS DE EXPEDICIÓN/ INFORMATION OF EXPEDITION

Lugar y fecha de expedición
Place and date of issue
CIUDAD AUTÓNOMA DE BUENOS AIRES, 22-enero-2018
CIUDAD AUTÓNOMA DE BUENOS AIRES, 22-january-2018

Oficial autorizado
Authorized officer
AR - 85 - BUIGUES GUSTAVO

CUVE 25779068582



Le même certificat reçu aux USA de l'Argentine via ePhyto

PCIT Generated Foreign Certificate Derived from Electronically Supplied Data	FOR OFFICIAL USE ONLY	X
Servicio Nacional de Sanidad y Calidad Agroalimentaria	PLACE OF ISSUE PUERTO DE BUENOS AIRES (CIUDAD AUTONOMA DE BUENOS AIRES)	
PHYTOSANITARY CERTIFICATE	NO. 779068	
TO: THE PLANT PROTECTION ORGANIZATION(S) OF United States	DATE INSPECTED April 10, 2018	
CERTIFICATION This is to certify that the plants, plant product or other regulated articles described herein have been inspected and/or tested according to appropriate official procedures and are considered to be free from the quarantine pests, specified by the importing contracting party and to conform with the current phytosanitary requirements of the importing contracting party including those for regulated non-quarantine pests.		
DISINFESTATION AND/OR DISINFECTION TREATMENT TREATMENT DETAILS		
DESCRIPTION OF THE CONSIGNMENT		
1. NAME AND ADDRESS OF EXPORTER CAMPO GRANDE S A 2022421, PEDREGAL (5529), MENDOZA, ARGENTINA	2. DECLARED NAME AND ADDRESS OF THE CONSIGNEE PAPAYA FRUIT GROWT SALG OG BANANMODNING I/S GRONLOKKEVEJ 10 - 5000 ODENSE C P.IVA DK 32 86 72 78	
3. NAME OF PRODUCE AND QUANTITY DECLARED (1) garlic (Bulbs) 40,0000 kilogram	4. BOTANICAL NAME OF PLANTS (1) Allium sativum	
5. NUMBER AND DESCRIPTION OF PACKAGES (1) 15 Box	6. DISTINGUISHING MARKS (1) CAMPO GRANDE	
7. PLACE OF ORIGIN (1) MENDOZA	8. DECLARED MEANS OF CONVEYANCE Container ship (Maritime transport)	
9. DECLARED POINT OF ENTRY NEW YORK		
ADDITIONAL DECLARATION No additional declarations		
Page 1 of 1		
10. DATE ISSUED April 10, 2018	11. INSPECTOR	12. NAME OF AUTHORIZED OFFICER (Type or Print) AR - 85 BUIGUES GUSTAVO
No financial liability with respect to this certificate shall attach to Servicio Nacional de Sanidad y Calidad Agroalimentaria or to any of its officers or representatives.		

Le format standardisé facilite l'examen des documents





Pays Participants



Pays avec échanges actifs de ePhytos – 41

- | | |
|---|---|
| <ul style="list-style-type: none">▪ Argentine▪ Brésil▪ Chili▪ Costa Rica▪ <u>République Dominicaine</u>▪ Union Européenne (EU)*▪ <u>Fiji</u>▪ <u>Ghana</u> | <ul style="list-style-type: none">▪ <u>Jamaica</u>▪ Mexico▪ Maroc▪ Nouvelle Zéland▪ Republique de Corée▪ <u>Samoa</u>▪ <u>Sri Lanka</u>▪ Etats Unis d'Amérique |
|---|---|

- Les pays dont les noms sont soulignés utilisent le GeNS.
- Plus de 25,000 certificats ePhyto sont générés par mois

* Actuellement, l'UE peut seulement recevoir les ePhytos. Mais la Hollande peut envoyer et recevoir des ePhytos.





Pays participants au Hub

Pays en période d'essai : 14

- | | | |
|---|--|--|
| <ul style="list-style-type: none">▪ Australie▪ Cambodge▪ Canada▪ Chine▪ Colombie | <ul style="list-style-type: none">▪ Equateur▪ Hong Kong▪ Kenya▪ Indonesie | <ul style="list-style-type: none">▪ Norvège▪ Paraguay▪ Pérou▪ Afrique du Sud▪ Royaume Uni |
|---|--|--|

- 20 autres pays ont exprimé leur intérêt





Pays participants au GeNS

Pays en période d'ESSAI – 20

- | | |
|--|---|
| <ul style="list-style-type: none">▪ Antigua & Barbuda▪ Burkina Faso▪ Iles Cayman▪ Iles Cook▪ Grenade▪ Guatemala▪ Côte d'Ivoire▪ Mali▪ Iles Marshall▪ République Dominicaine | <ul style="list-style-type: none">▪ Myanmar▪ Niger▪ Papouasie Nouvelle Guinée▪ Saint Kitts & Nevis▪ Sainte Lucie▪ Saint Vincent & Grenadines▪ Sao Tome & Principe▪ Sénégal▪ La Gambie▪ Ouganda |
|--|---|
- Environ 50 autres pays: régions Afrique, Caraïbes et îles du Pacifique
 - Formation en ligne sur ePhyto disponible au– <https://training.ephytoexchange.org/>





Vidéo de formation en ligne pour GeNS

IPPC ePhyto solutions - Training platform

GeNS Training is now live





Etudes de cas Phyto

9 études de cas de ePhyto ont été réalisées l'année dernière

- Céréales
- Semences
- Fruits

Économies signalées grâce à ePhyto (études de cas)

- Gain de temps de 1 à 2
- Au moins \$25 US dollars par envoi juste en frais d'envoi (DHL, FedEx, UPS, à main)

Exemple de 2 envois suspendus résolus grâce à ePhyto

- Expédition de céréales
 - \$36,000 d'économie
 - Envoi libéré en quelques heures plutôt qu'en jours
- Expédition de fruits à la grenade
 - Envoi périssable
 - Durée de vie maintenue



Les prochaines étapes de ePhyto?

Solution ePhyto: Hub et GeNS

- Échanger des avis de non-conformité
- Constatations d'inspection
- Autres systèmes gouvernementaux (guichet unique, douanes, SYDONIA, etc.)
- Systèmes industriels
- Poursuite de la collaboration avec les agences SPS (OIE et CODEX)
- Poursuite de la collaboration avec les agences non phytosanitaires (CITES, Global Alliance for Trade Facilitation)
- Maintenance de routine et améliorations
- Traduction dans d'autres langues (GeNS)



Questions?



Contactez nous

IPPC Secretariat

Food and Agriculture Organization
of the United Nations (FAO)

Tel.: +39 06 57054812

Email: ippc@fao.org

Web:

www.ippc.int

www.fao.org/plant-health-2020

