



Food and Agriculture Organization
of the United

Desert locust Upsurge and FAO Response

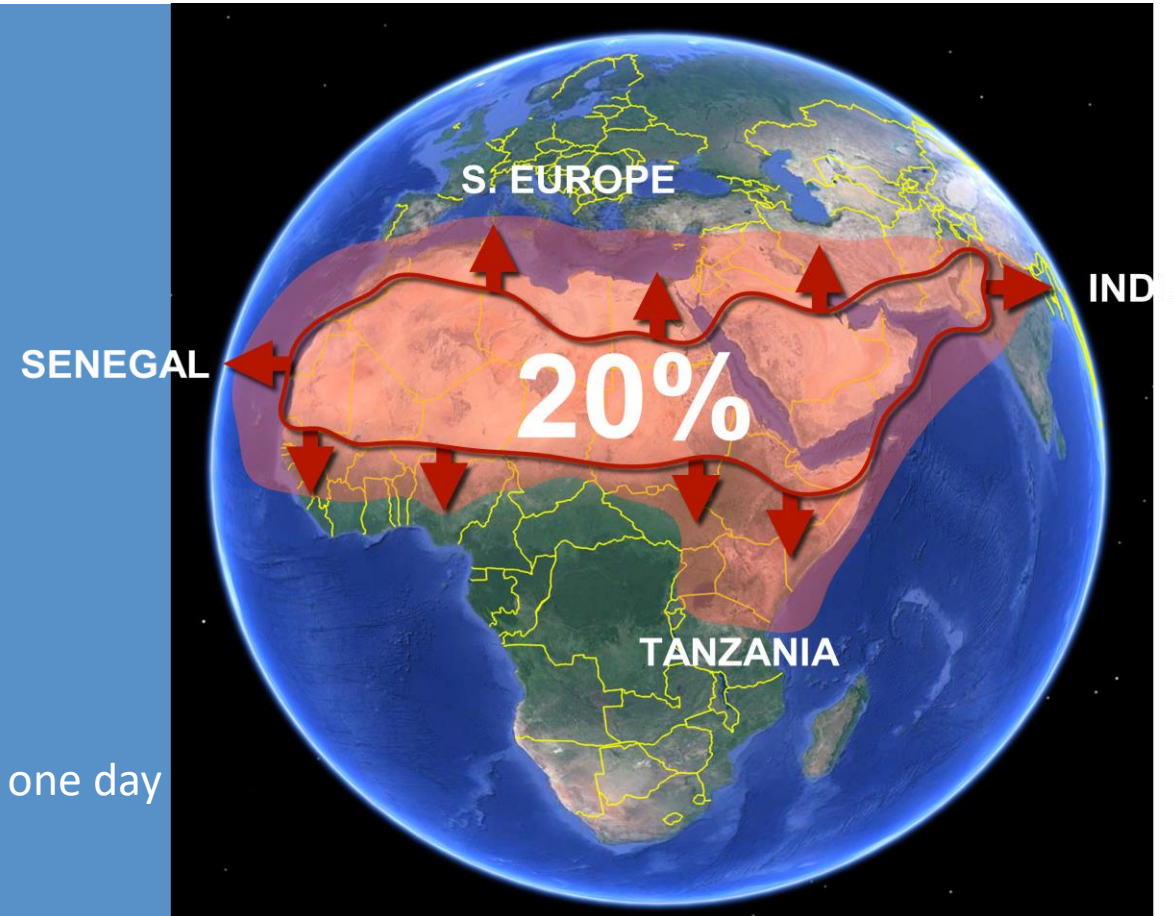
9 September 2020



Plant Production and Protection Division (NSP)

Key facts

- **Most dangerous** migratory pest in the world
- **1 km²** can have 40 to 80 million locust
- **20% Earth's land** can be affected
- **150 km** migration during the day
- **20-fold** exponential increase every 3 months
- **1 km² swarm** can eat the same food as 35,000 people in one day





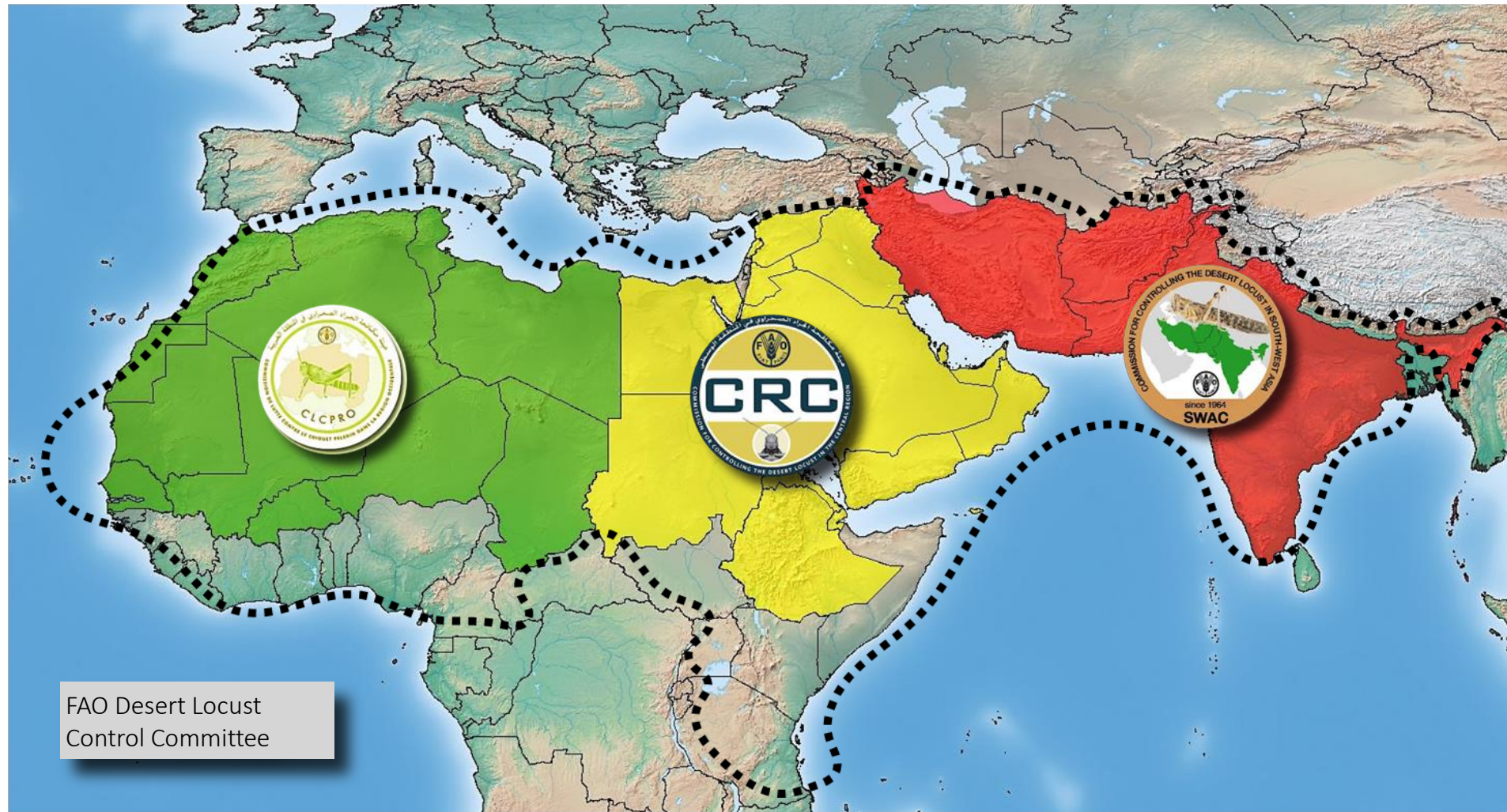
Key facts



a swarm the size of **Rome**
can eat the same food
in one day
as everyone in **Kenya**



Successful coordination = working together for 50 years



DL M&EW System



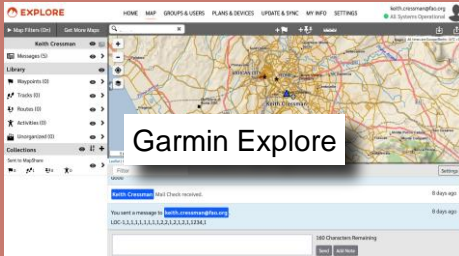
eLocust3



Novacom GeoFlex



eLocust3g



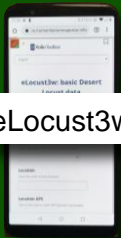
Garmin Explore



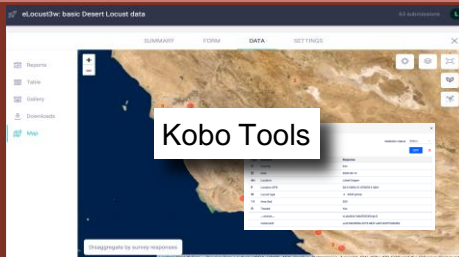
eLocust3m



PlantVillage



eLocust3w



Kobo Tools

Digital field
tools

Intermediary
cloud platforms



Rv4.1
National GIS

Country analysis
& planning



SWARMS
DLIS GIS

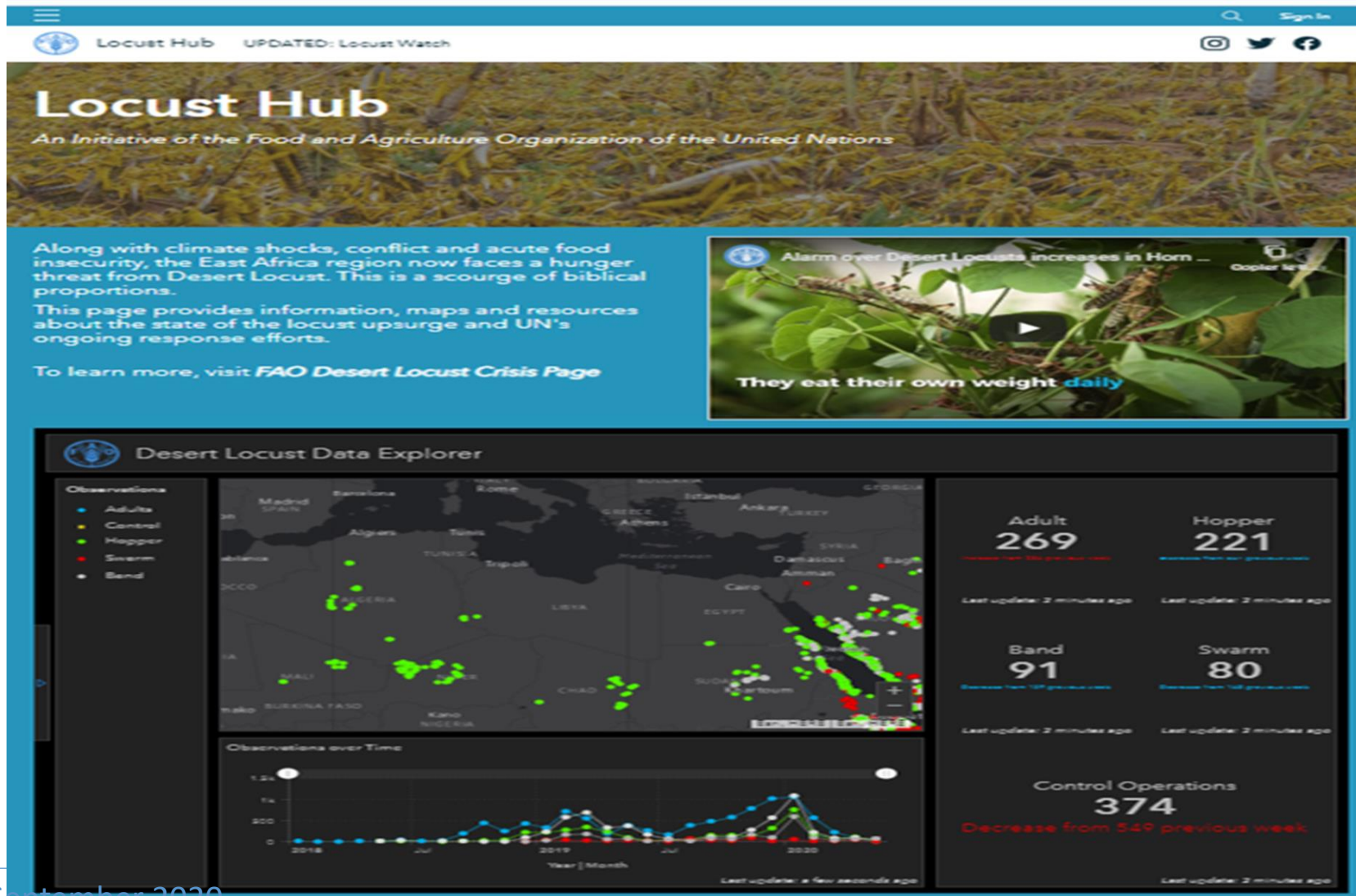
Global analysis
& forecasting



Locust Hub

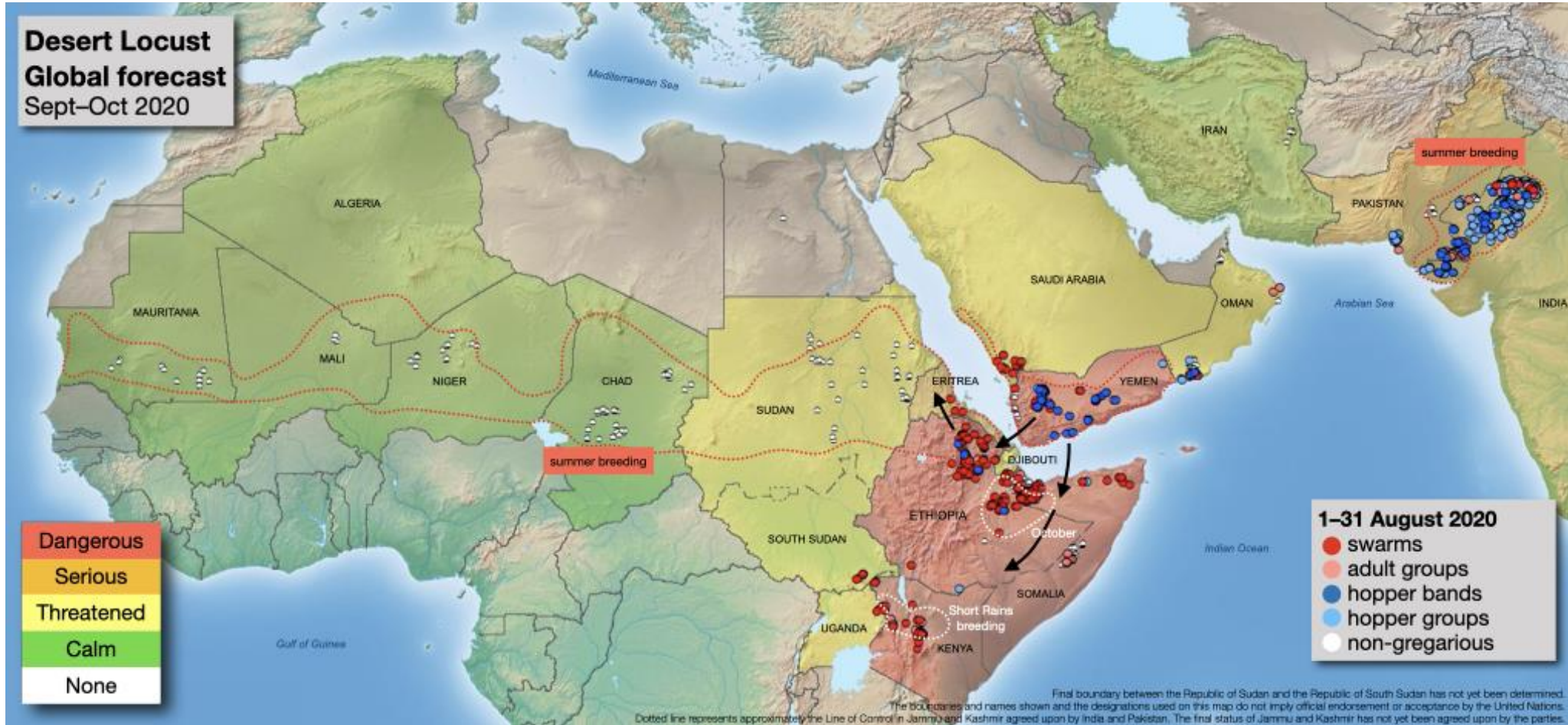


<https://locust-hub-hqfao.hub.arcgis.com/>



Global Desert Locust Situation

Situation – Forecast



SW Asia

- breeding
- progress

E Africa

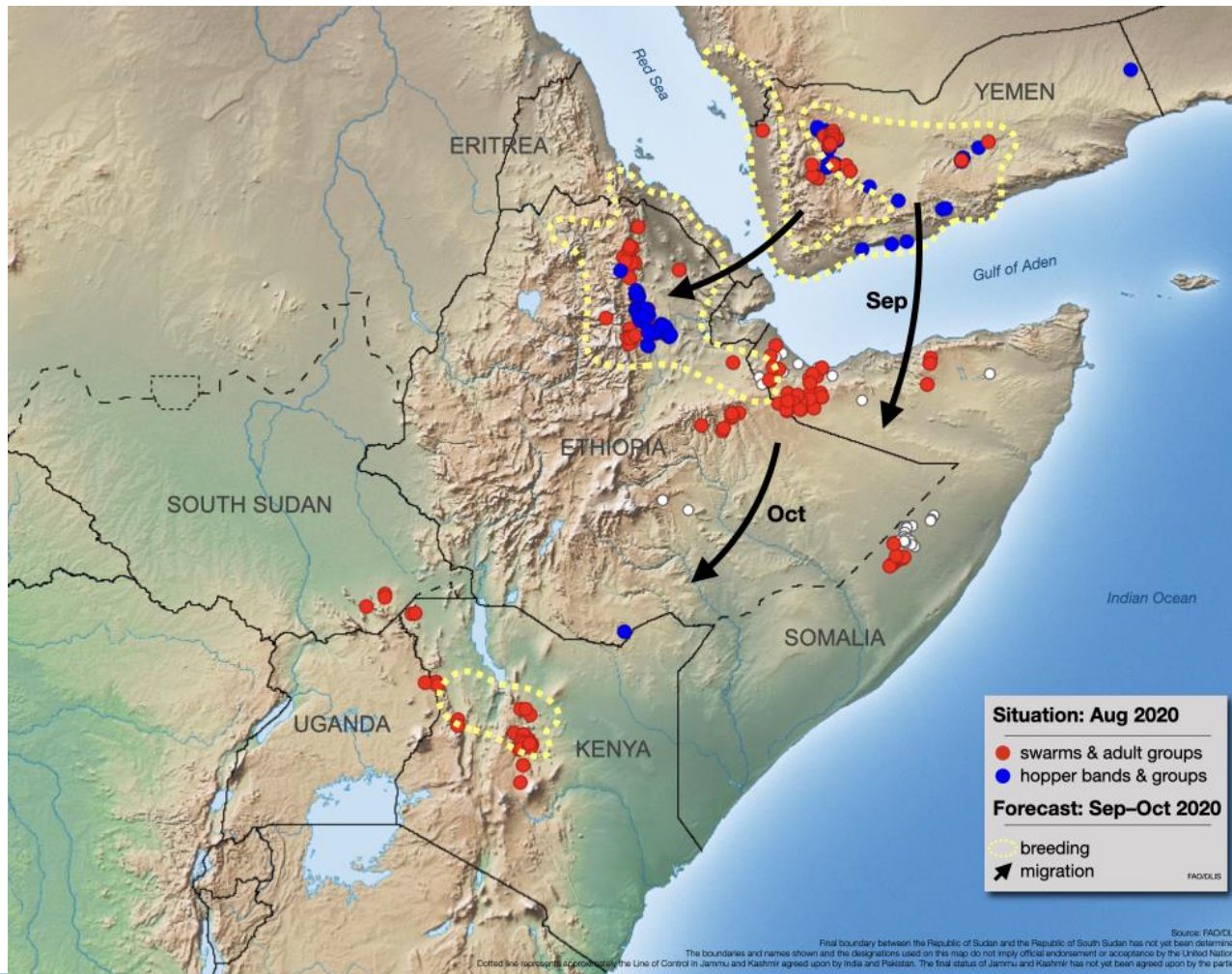
- breeding
- dangerous

W Africa

- local breed
- calm

Greater Horn of Africa and Yemen

Situation – Forecast



Situation

- Hopper bands (NE Ethiopia)
- Immature swarms (Kenya, Somalia)
- Bands & swarms (Yemen)
- Deteriorating (Eritrea)

Control

- Ground and aerial operations

Challenges

- Insecurity (Somalia, Yemen)
- Communications (Ethiopia, Eritrea)



Food and Agriculture Organization
of the United Nations

FAO's GLOBAL RESPONSE PLAN

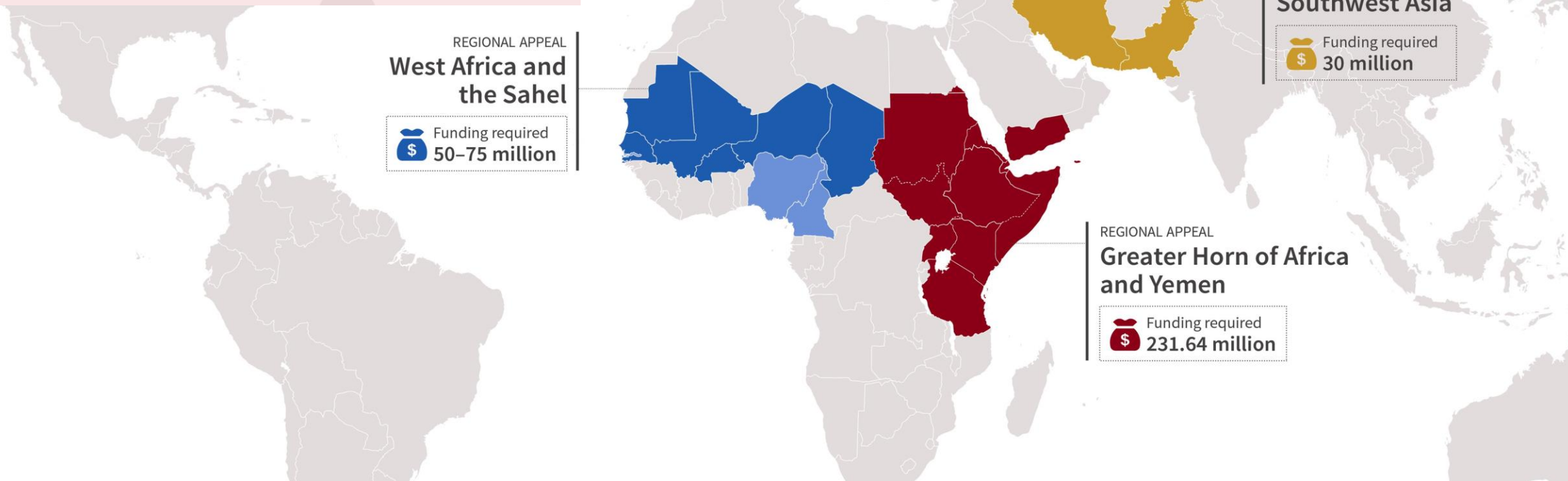
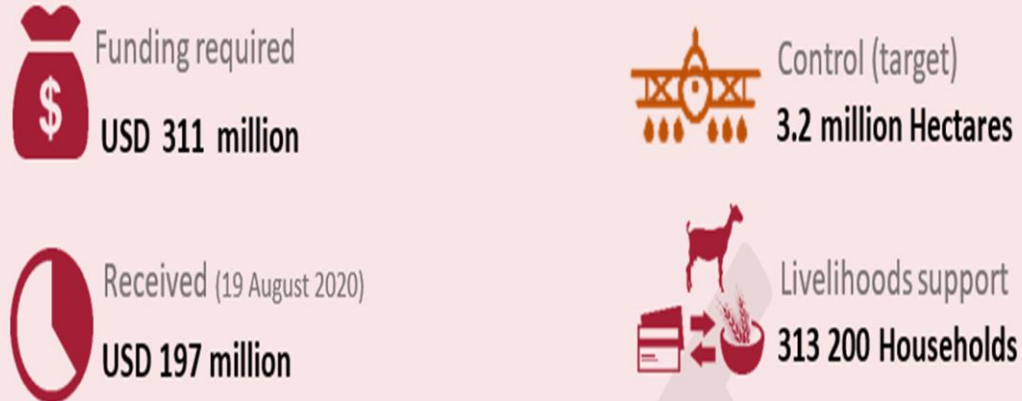
JANUARY-DECEMBER 2020

Sustain
Scale up
Prepare and prevent





At a Glance





DESERT LOCUST UPSURGE | FAO'S GLOBAL RESPONSE PLAN – SUSTAIN, SCALE UP, PREPARE AND PREVENT

3 pillars of FAO's response



CURB THE SPREAD OF DESERT LOCUST

Surveillance, early detection and forecasting
Desert locust control operations (aerial and ground)
Impact assessments and environment, health and safety



SAFEGUARD LIVELIHOODS AND PROMOTE EARLY RECOVERY

Cash interventions
Supplementary livestock feed and forage production
Crop and vegetable production inputs and services



COORDINATION AND PREPAREDNESS

Deploy rapid surge support
Facilitate regional partnerships, collaboration, coordination and advocacy
Strengthen regional and national capacity and enhance preparedness





Greater Horn of Africa and Yemen

Target

up to 3.2 million ha

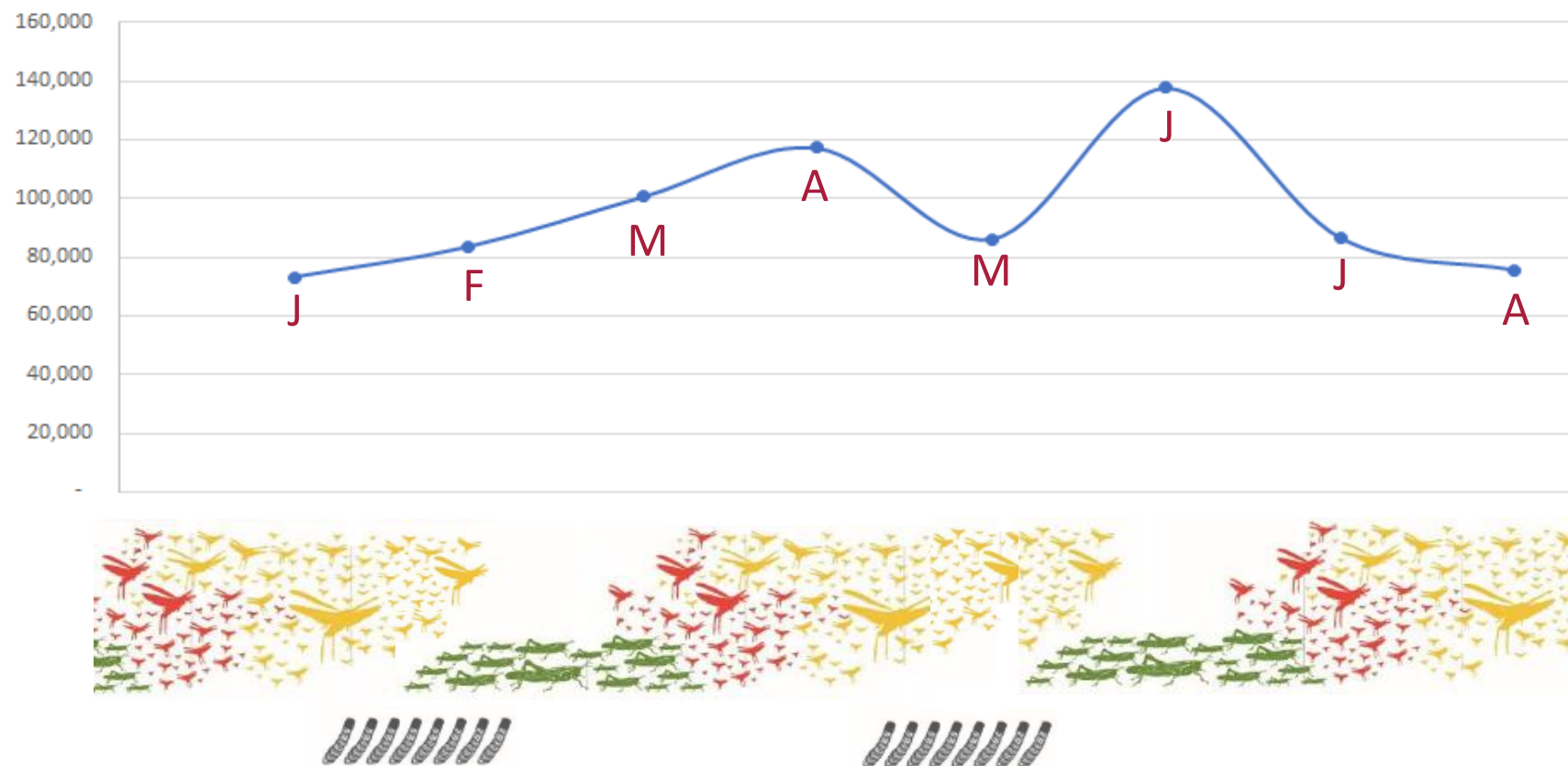
(by year-end)

Treated (Jan. to 31 Aug. 2020)

1,887 001 ha

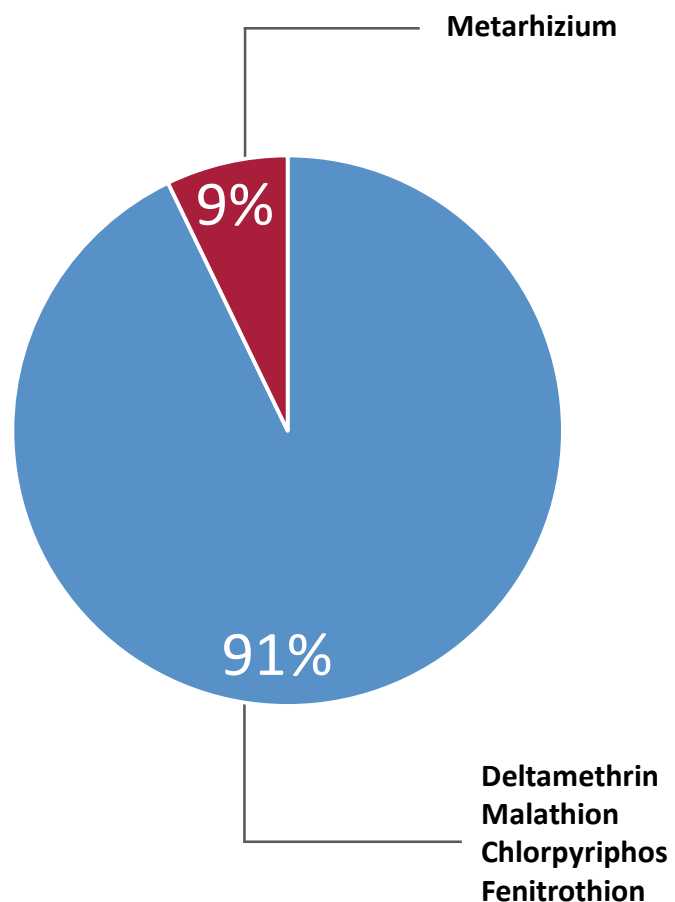
**759 718
ha**

**1,127,283
ha**



Greater Horn of Africa and Yemen

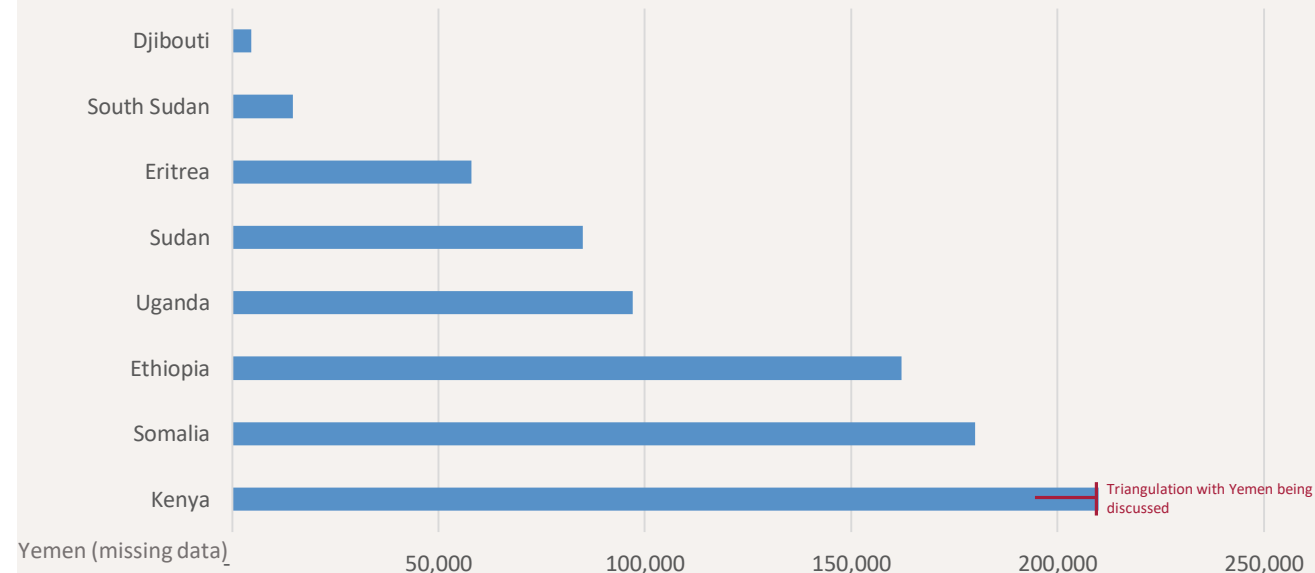
Pesticides used and stock



Pesticides/bio-pesticides analyzed efficacy (Eastern Africa)

	Bio-Pesticides	conv. Pesticides
Efficacy	75-80%	80-85%
Action (time)	avg. 14 days	Avg. 6-12 hours

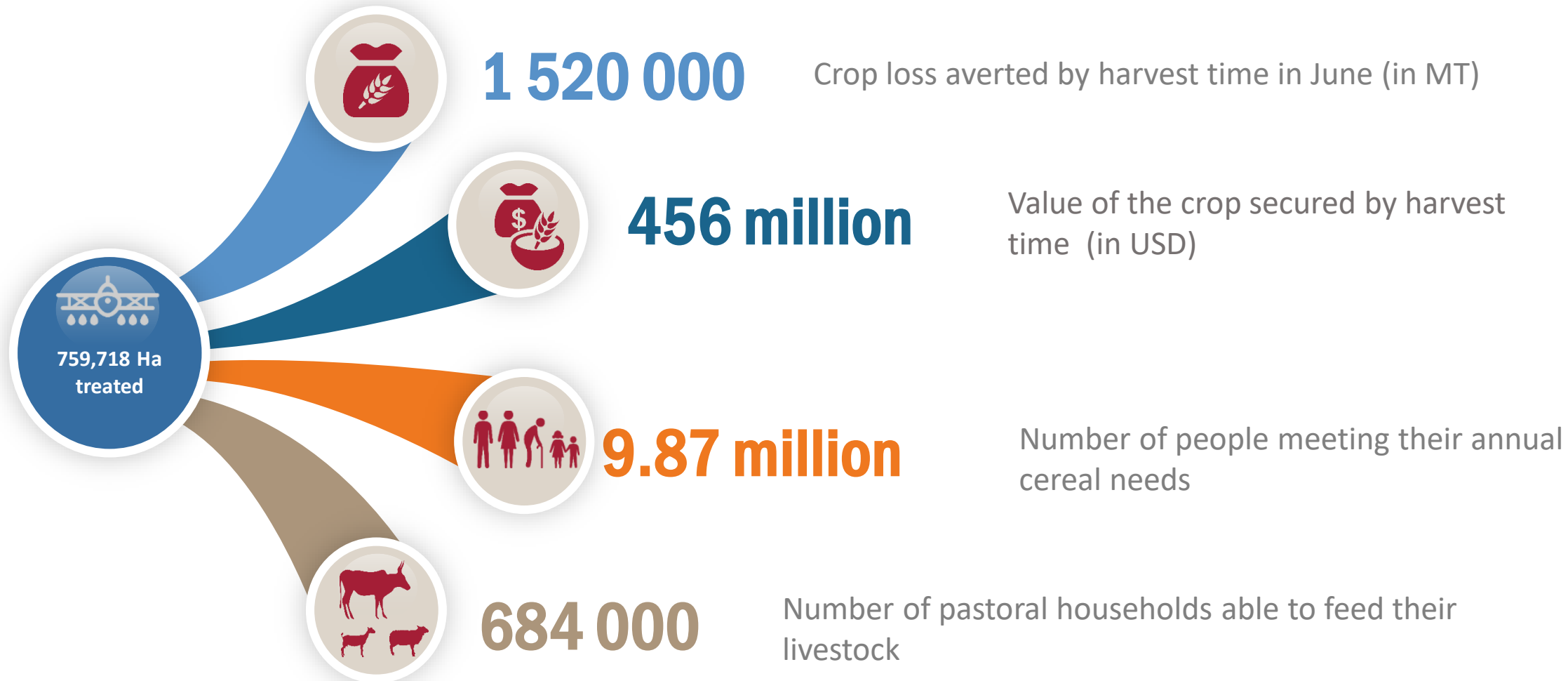
Pesticides/bio-pesticides stock (expressed in spraying Ha)



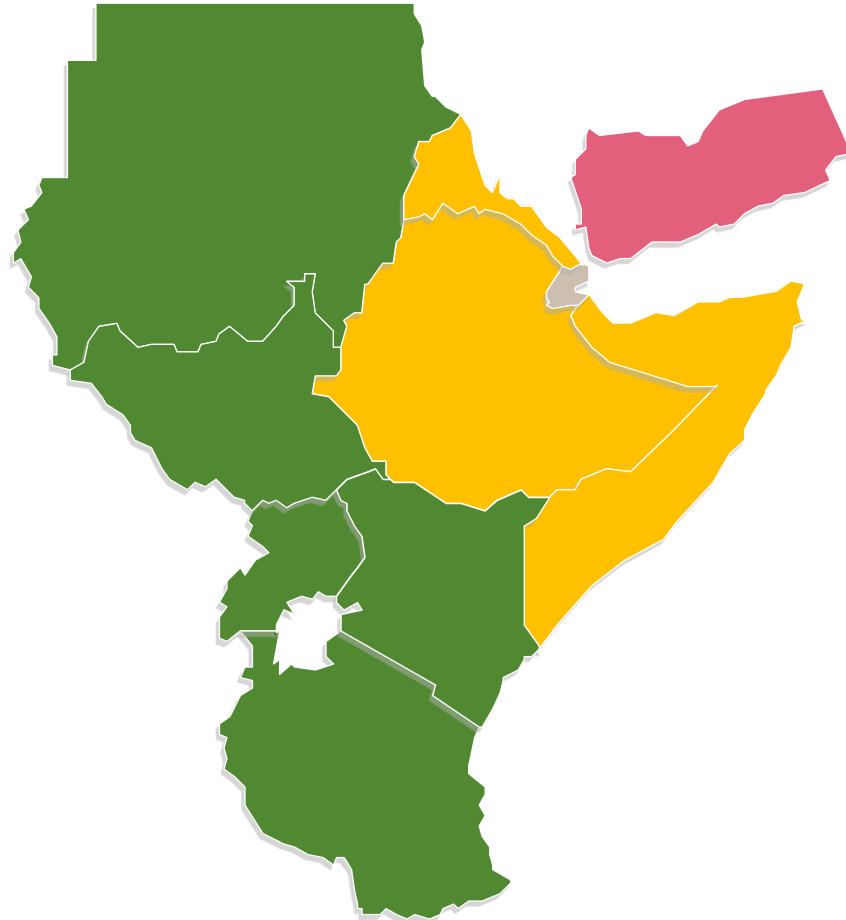


Greater Horn of Africa and Yemen

Impact of acting early



Are we winning or losing



We won some battles but not yet the war
≥520 Billion Desert Locust killed since January



Significant progress

- Kenya (from 30 counties to only 2 counties)
- Tanzania (no Desert Locust)
- Sudan (Summer breeding under surveillance and control)
- South Sudan (preparedness, pre-positioning)
- Uganda (all initial swarms controlled)



Good progress but high risk

- Ethiopia (no DL in south but risk of re-infestation; swarms moved to Afar, Somali regions)
- Somalia (significant acceleration of surveillance and control)
- Eritrea (surveillance and control on-going)



Slower progress

- Yemen (limited resources, limited access)



No Threat at the moment

- Djibouti

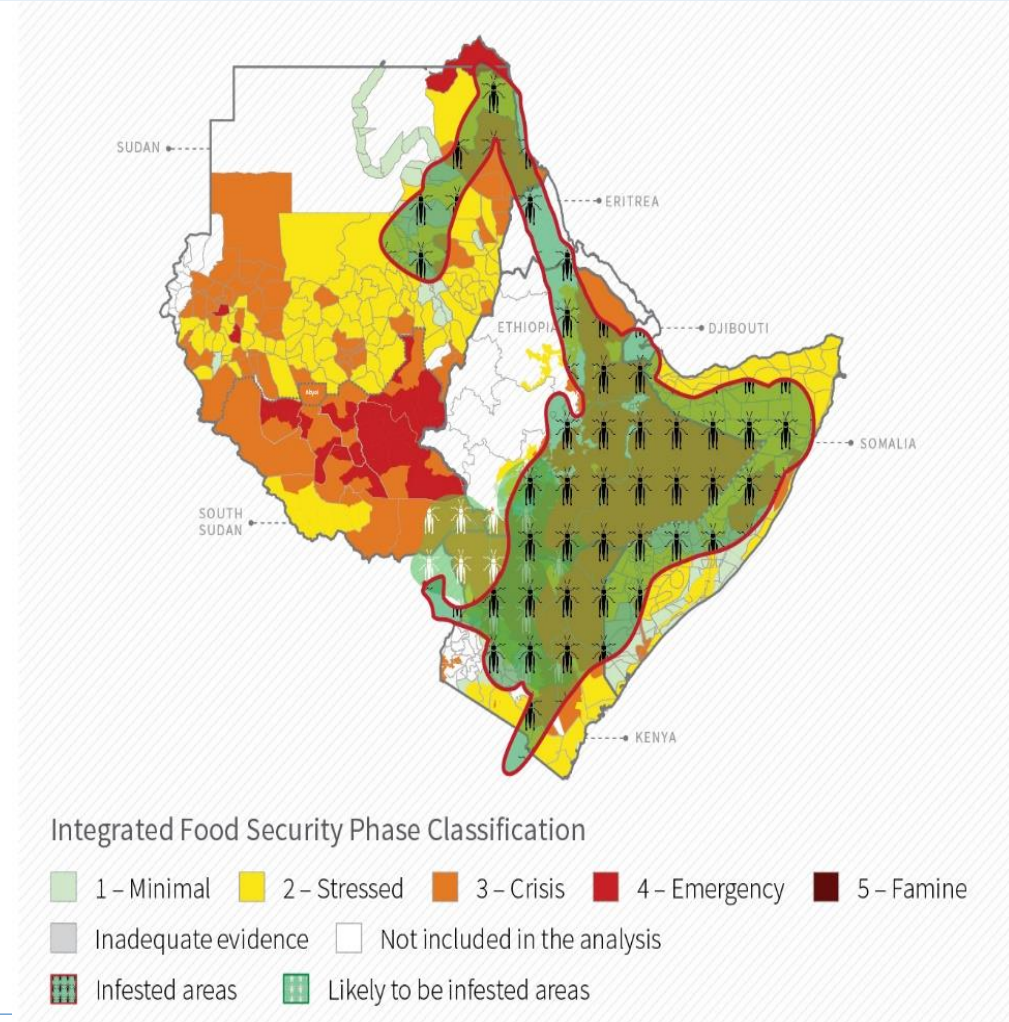
Impact on livelihood and food security

West Africa over
12.3 million

East Africa and
Yemen
over 27 million

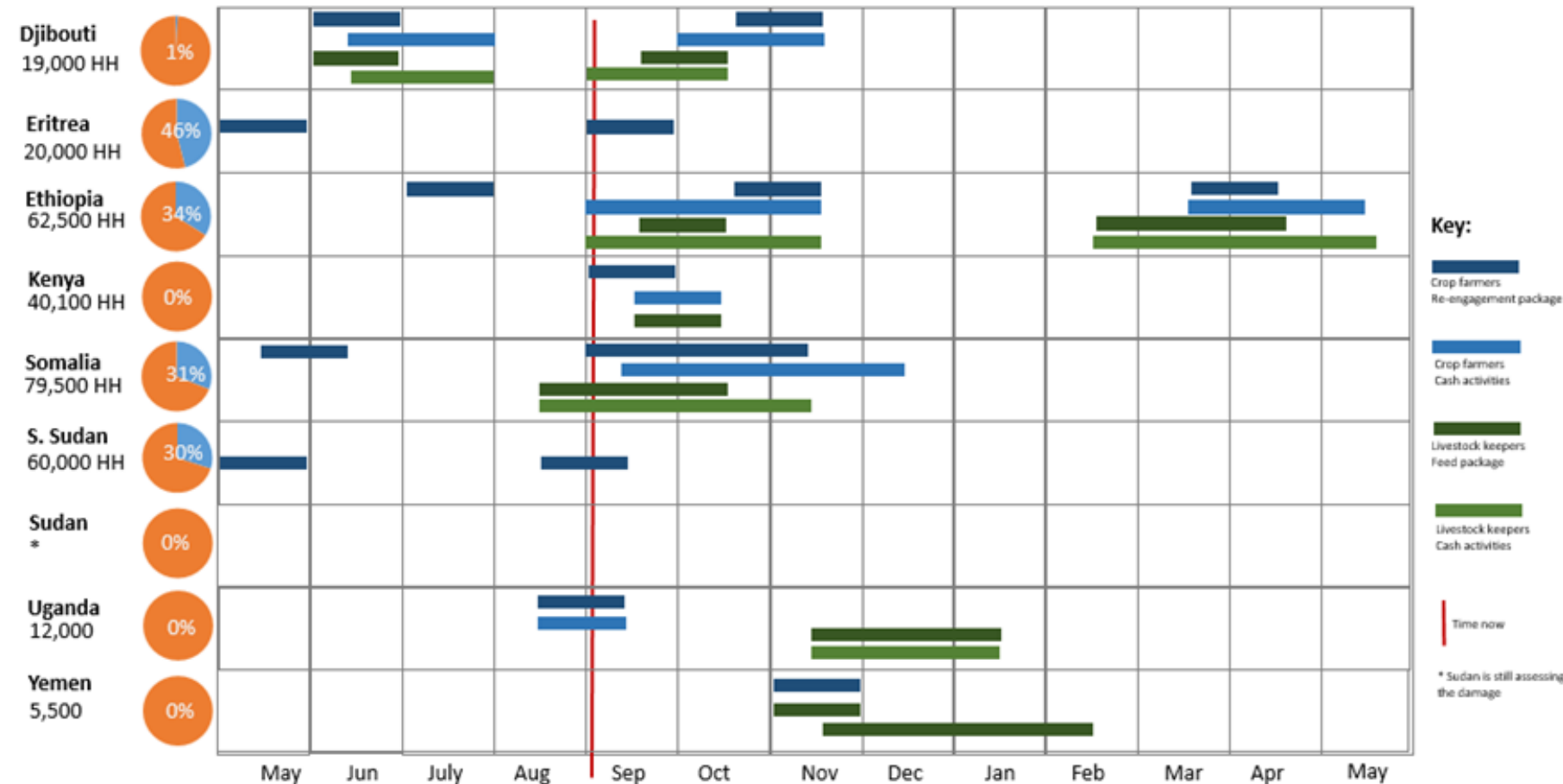
Southwest Asia over
3 million in Pakistan
And one-third of the
population of Iran

People in IPC Acute Food
Insecurity Classification
IPC 3+
in DL affected areas



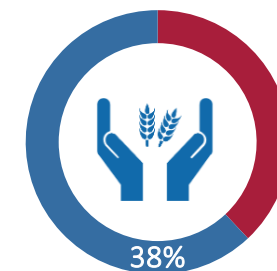
Greater Horn of Africa and Yemen

Details of FAO livelihoods support (achieved and planned)



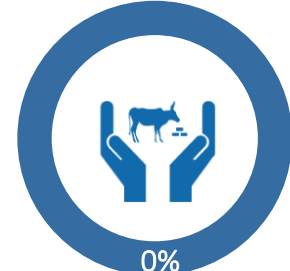
	Appeal targets (HH)	Adjusted targets (HH)	HH reached
Djibouti	4,400	19,000	200
Eritrea	6,000	20,000	9,130
Ethiopia	41,000	62,650	21,473
Kenya	15,500	39,233	-
Somalia	58,350	79,500	24,295
SSudan	10,000	60,000	17,950
Sudan	2,500	N/A	N/A
Uganda	10,500	12,000	-
Yemen	5,500	5,500	-
Total	153,750	298,750	73,048

Farming HH



72,948 HHs
191,400 HHs

Livestock herders HH



100 HHs
107,350 HHs

**Thanks for
attention**

