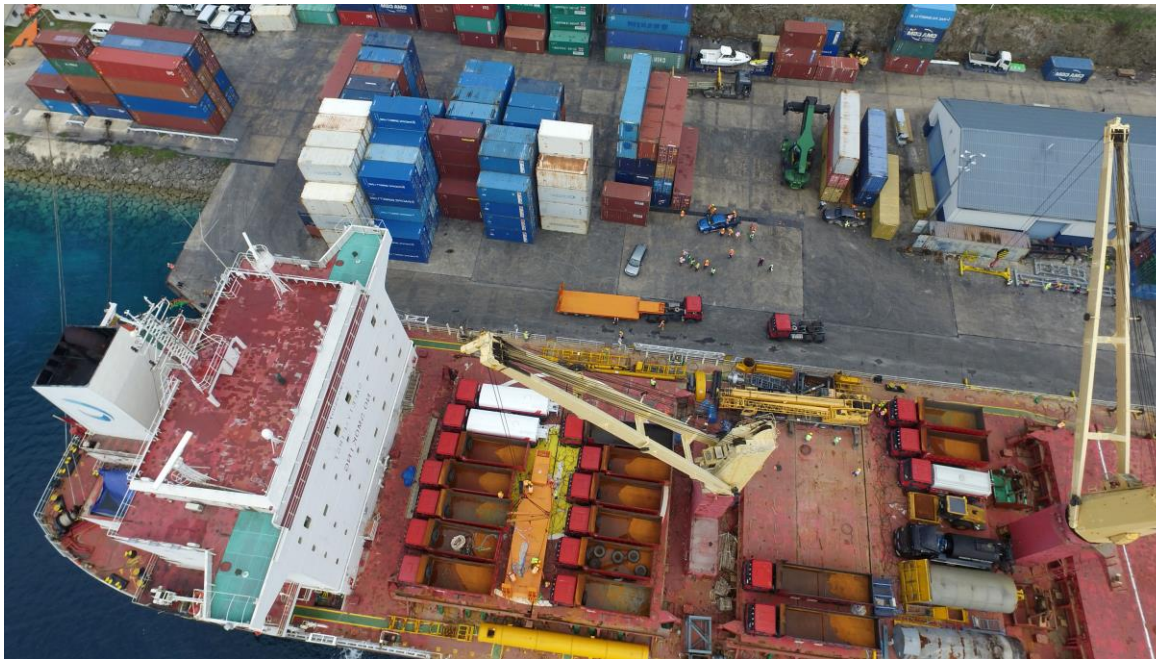




Standards and Trade  
Development Facility

## Driving better SPS decision-making: STDF's evidence-based approach



**IPPC Strategic  
Planning Group**

8 Oct. 2019

Marlynne Hopper

[standardsfacility.org](http://standardsfacility.org)

## Context

Different SPS investment needs

Resource constraints

Decision-making processes ad hoc or  
lacking transparency

Resources not always targeted to where  
they're likely to have greatest impact





## Evidence-based approach to strengthen SPS decision-making

Facilitates public-private dialogue

Supports project design & fundraising

Increases high-level awareness about value of SPS investments

Greater resource efficiency, linked to national policy objectives



## Key principles

**Flexibility:** Prioritize investments using criteria that are measured differently

**Pragmatism:** Use best available data and information

**Participation:** Inputs encouraged from diverse stakeholders

**Transparency:** Criteria and data are documented and open to scrutiny

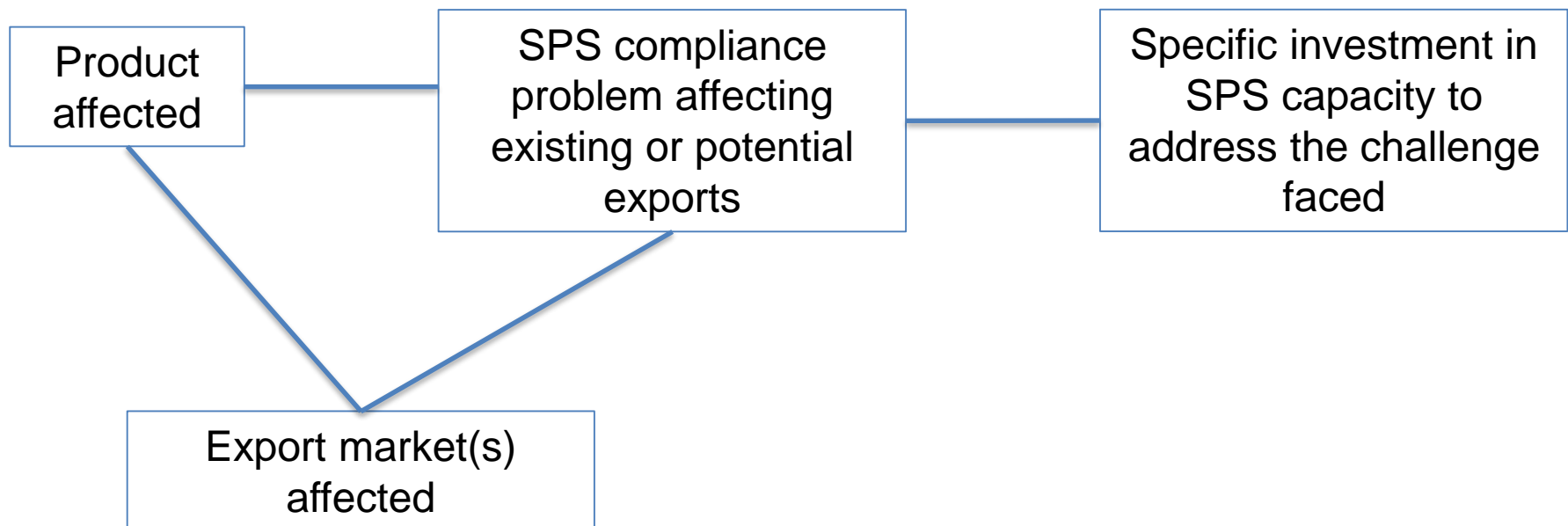
**Linkages:** Complements SPS evaluation tools, including the PCE



## Process



## Definition of SPS investment options







## Decision criteria examples

**Cost & complexity:** Upfront investment, ongoing costs, difficulty of implementation

**Trade impacts:** change in export value, diversification, reputation

**Domestic spillovers:** agriculture productivity, public health

**Social impacts:** on employment, poverty, vulnerable groups

## How does P-IMA work?

Multi-criteria decision analysis:  
outranking approach

Inputs: Decision criteria measures,  
decision weights,  
data on investment options

D-Sight software: compares options  
in pair-wise fashion, calculates  
positive and negative flows

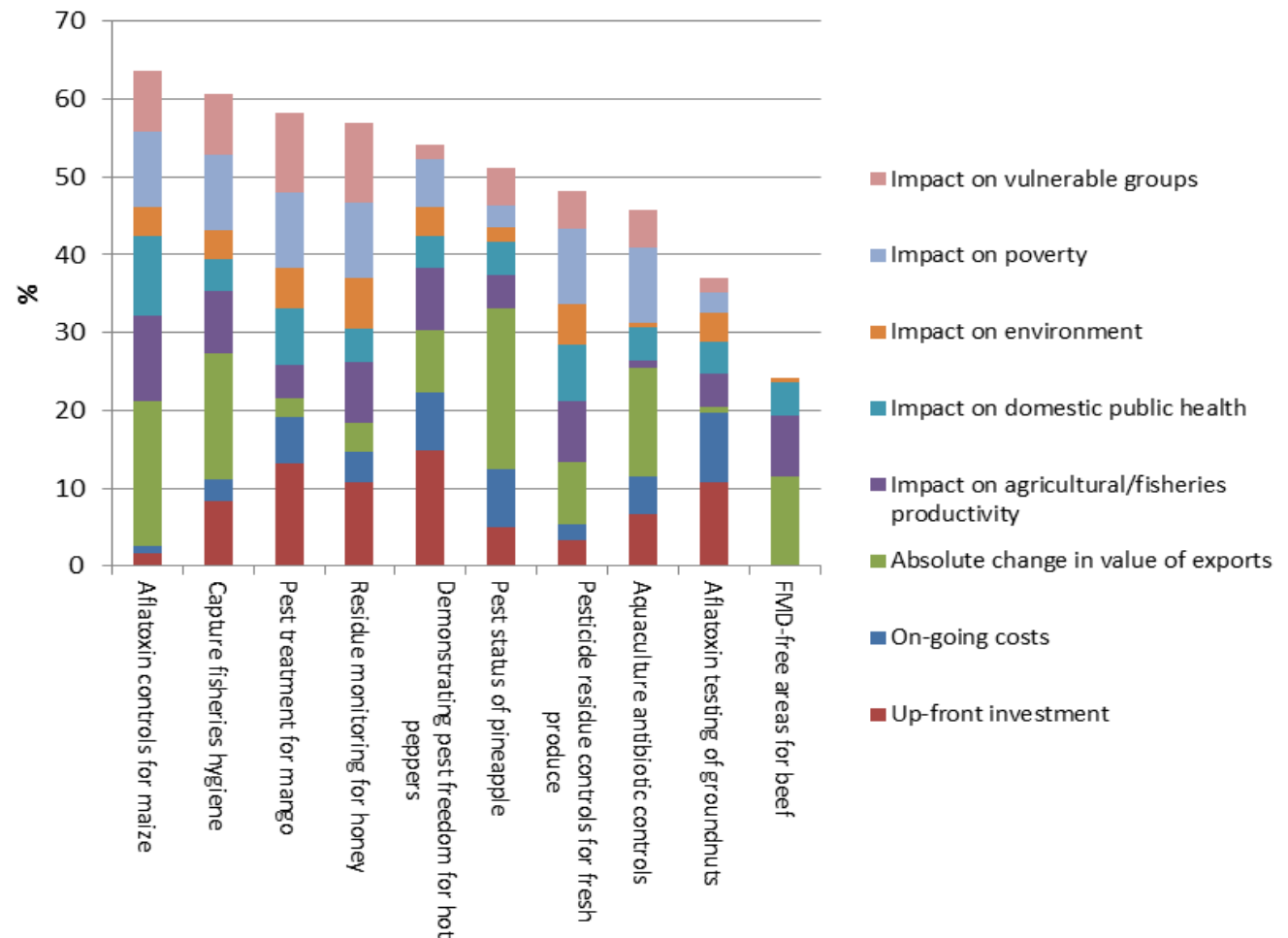
Options ranked on basis of net flows

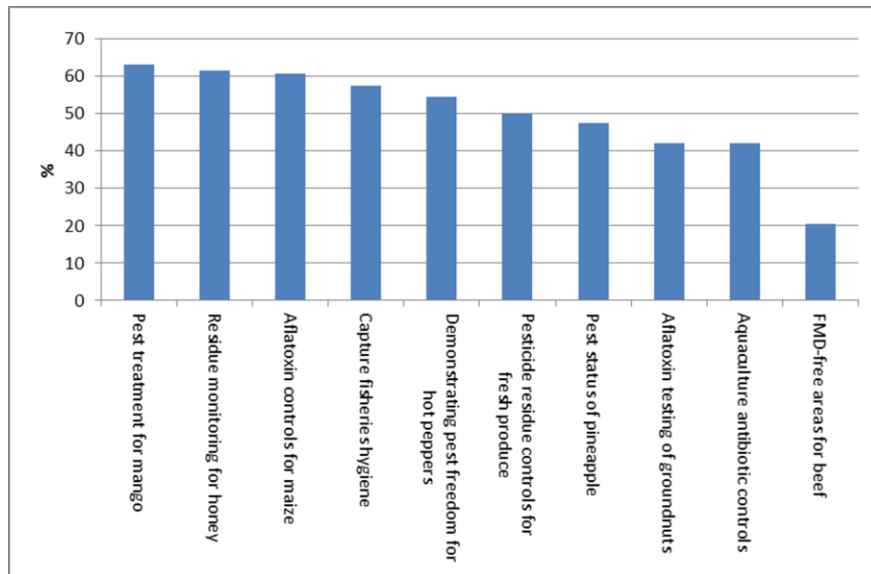




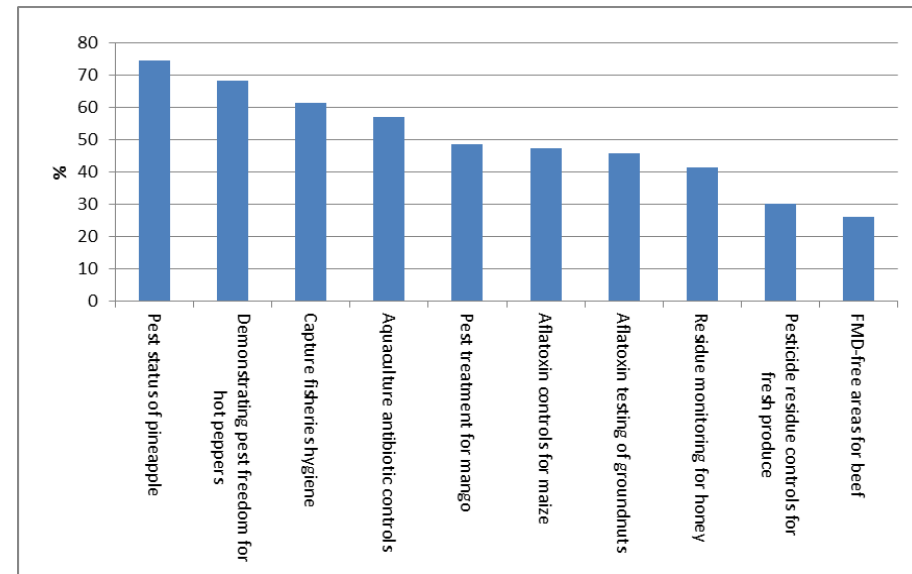
## Rankings of diverse SPS investment options:

## Contribution analysis for Aflandia





**Equal weights model**



**Costs and trade model**

## Experiences

COMESA: Mainstreaming SPS  
investments in CAADP & policy  
frameworks

STDF PPGs: Madagascar,  
Belize, Ecuador, Tajikistan, etc.

Pilot applications (Africa, Asia)





## Looking Ahead

National commitment / champion is key

Requires time, capacity and some  
resources

Issues related to data quality and  
availability

Better linking P-IMA to national planning  
processes

Develop more regional capacity to  
expand use and sustainability

Options to strengthen linkages with  
official capacity evaluation tools, PCE?



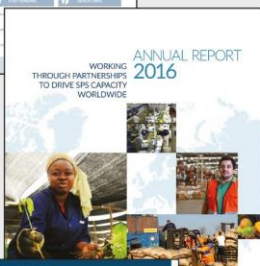


Standards and Trade  
Development Facility



**FIND OUT MORE  
ABOUT STDF'S WORK  
AND GET INVOLVED**

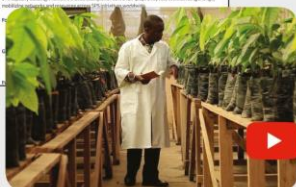
Access SPS information and tools at  
[www.standardsfacility.org](http://www.standardsfacility.org)



Browse SPS resources  
in the **online Library**

Share experiences  
and lessons at  
**STDF's Working Group**

Sign up for updates through  
**STDF's e-news**



View good practice films on  
**STDF's YouTube channel**



**The STDF is currently supported by:**



**MINISTRY OF  
FOREIGN AFFAIRS  
OF DENMARK**  
*Danida*



Ministry for Foreign  
Affairs of Finland



Federal Ministry  
of Food  
and Agriculture



**Irish Aid**  
Rialtas na hÉireann  
Government of Ireland



Kingdom of the Netherlands



Norwegian Ministry  
of Foreign Affairs



**Sweden  
Sverige**



**UKaid**  
from the British people



**U.S. FOOD & DRUG  
ADMINISTRATION**

