

International Plant Protection Convention

International Standards for Phytosanitary Measures & Food Security



Mr Bart Rossel,
Director, International Plant Health Program, Australia
IPPC Standards Committee Chairperson

IPPC

Vision

Protecting global plant resources from pests

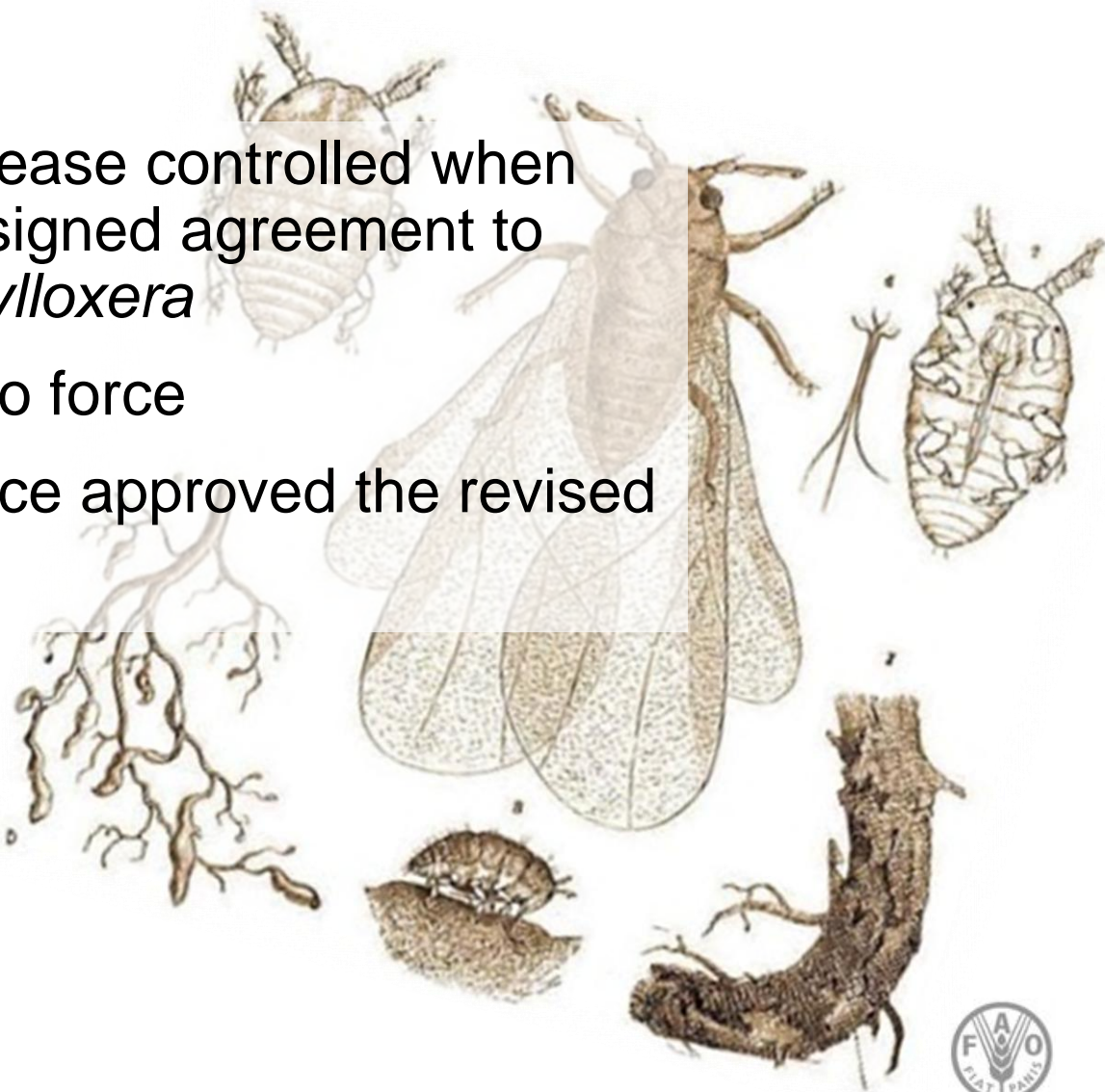
Mission

To secure cooperation among nations in protecting global plant resources from the spread and introduction of pests of plants, in order to preserve food security, biodiversity and to facilitate trade

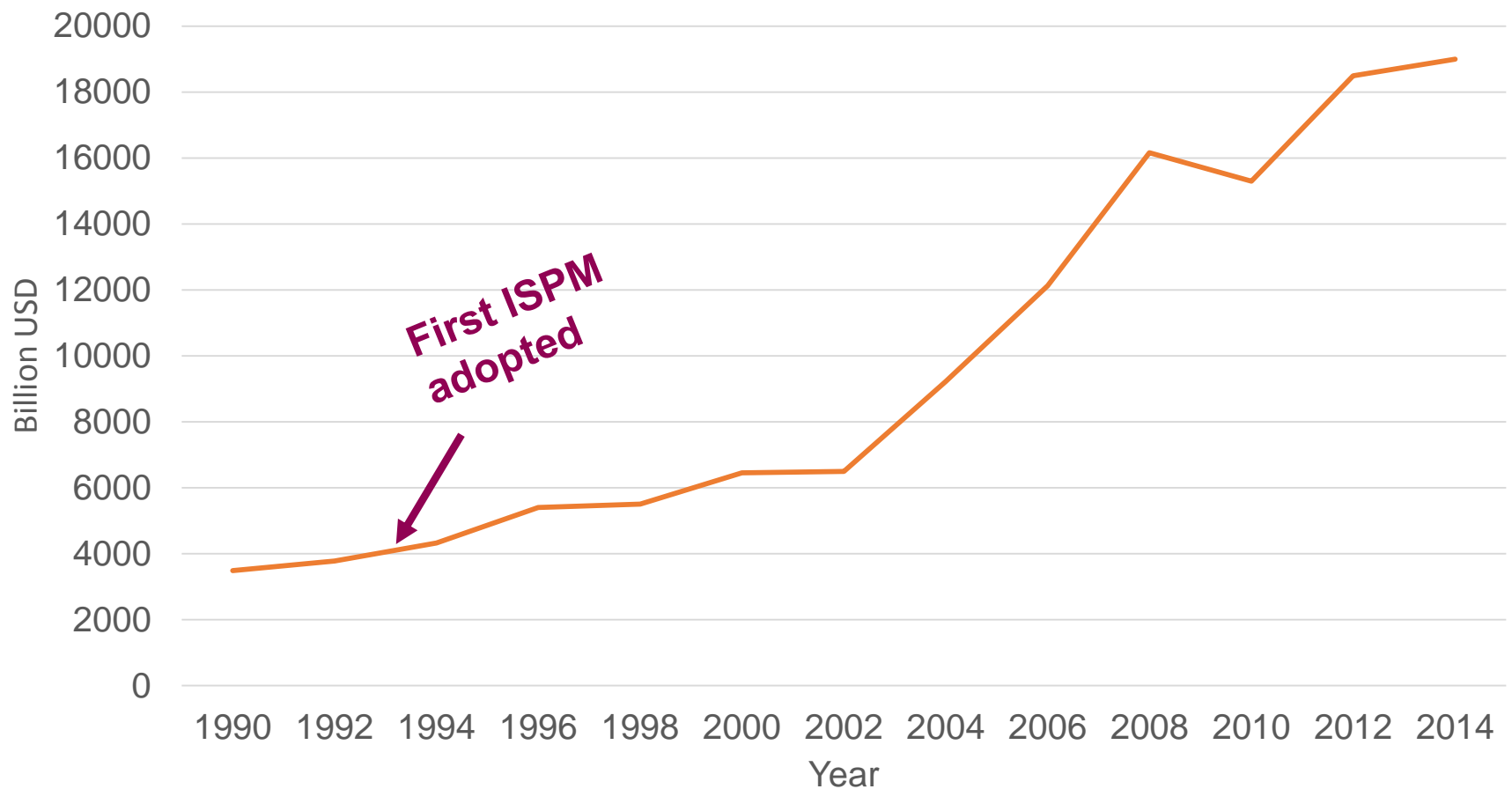


Historic milestones

- **1881:** First grape disease controlled when European countries signed agreement to control spread of *Phylloxera*
- **1952:** IPPC came into force
- **1997:** FAO Conference approved the revised IPPC text



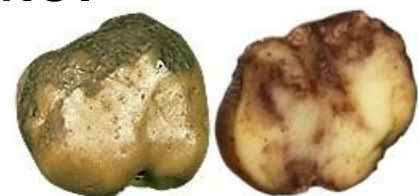
Increase in international trade between 1990 and 2014

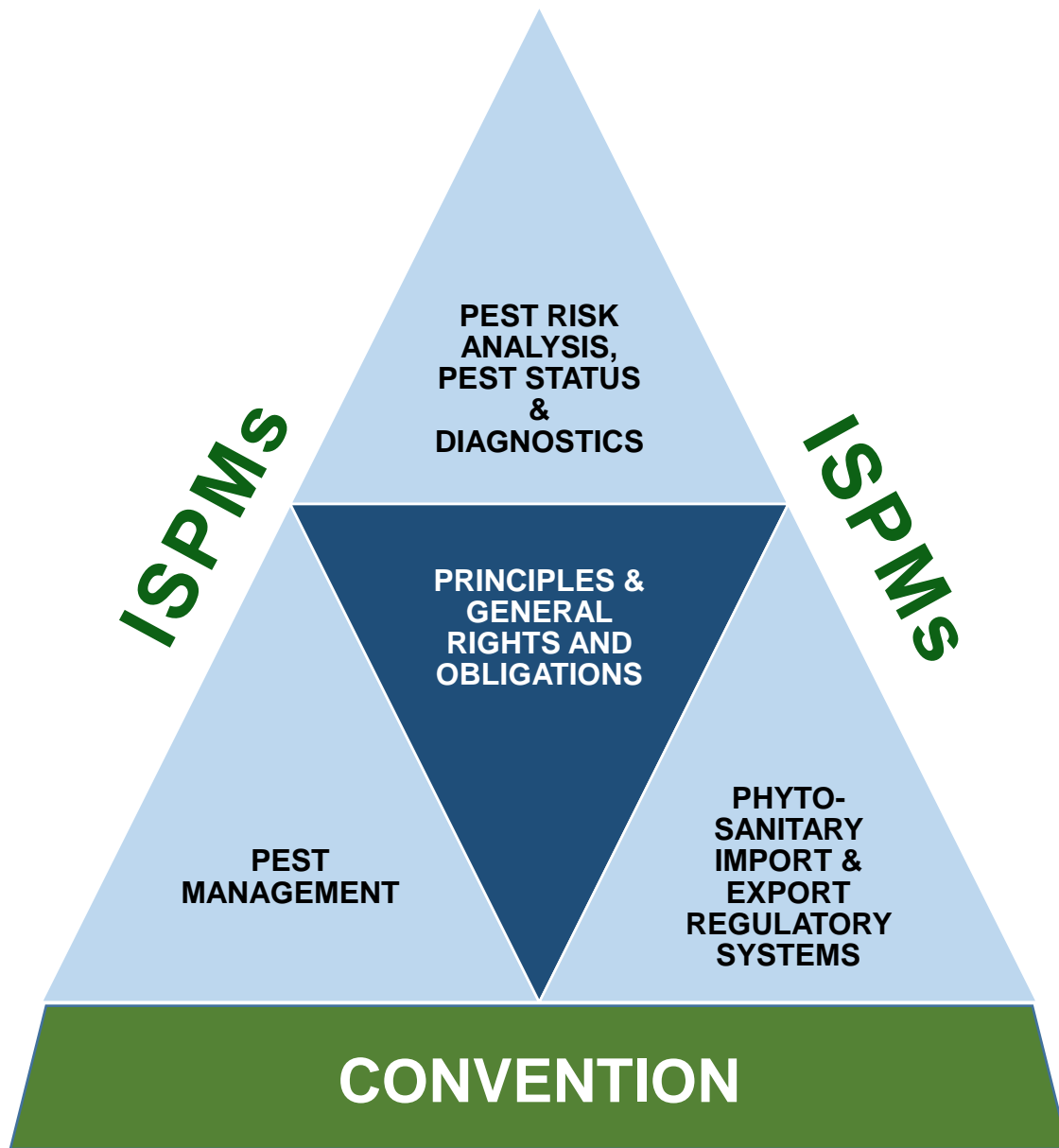


Economic impact of pests

Once pest species become established over large areas, they are often impossible to eradicate.

- Late blight fungus, Ireland
- Coffee leaf rust, Sri Lanka and Brazil
- Wheat stem rust, Kenya
- Banana Xanthomonas Wilt, Uganda
- Painted Apple Moth, New Zealand





International Standards for Phytosanitary Measures (ISPMs)

- Are adopted by consensus by the Commission on Phytosanitary Measures
- Are based on sound scientific information
- Provide a framework for the harmonization of the world's phytosanitary systems
- Facilitate safe trade



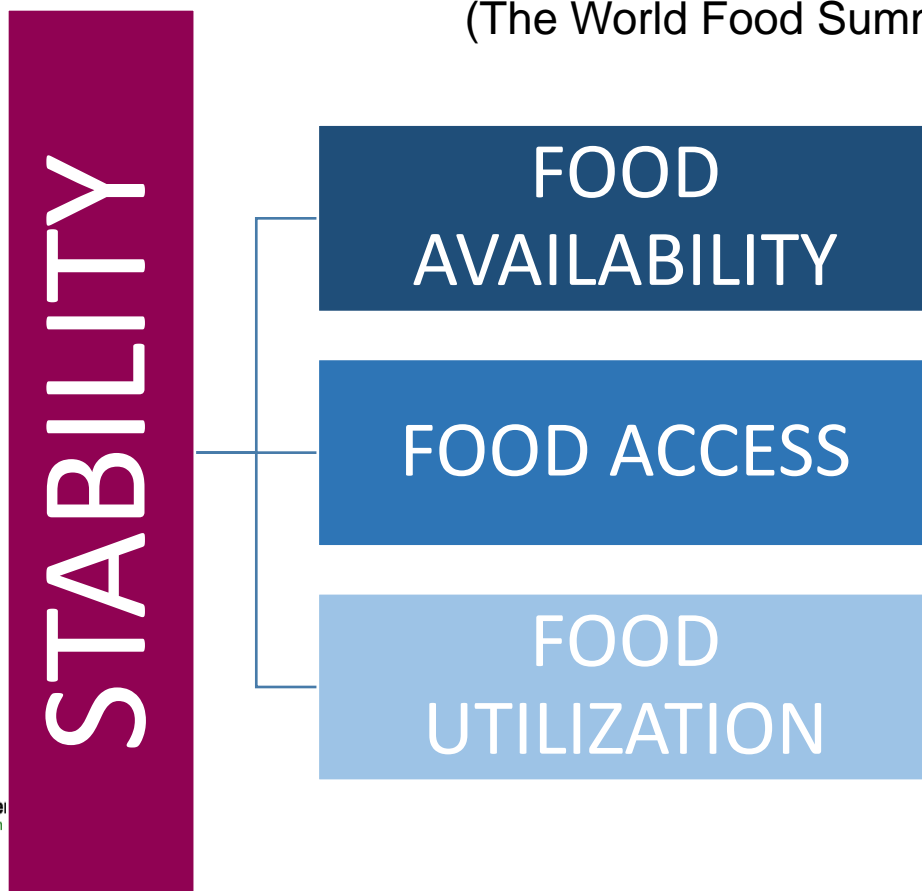
The IPPC and the SDGs



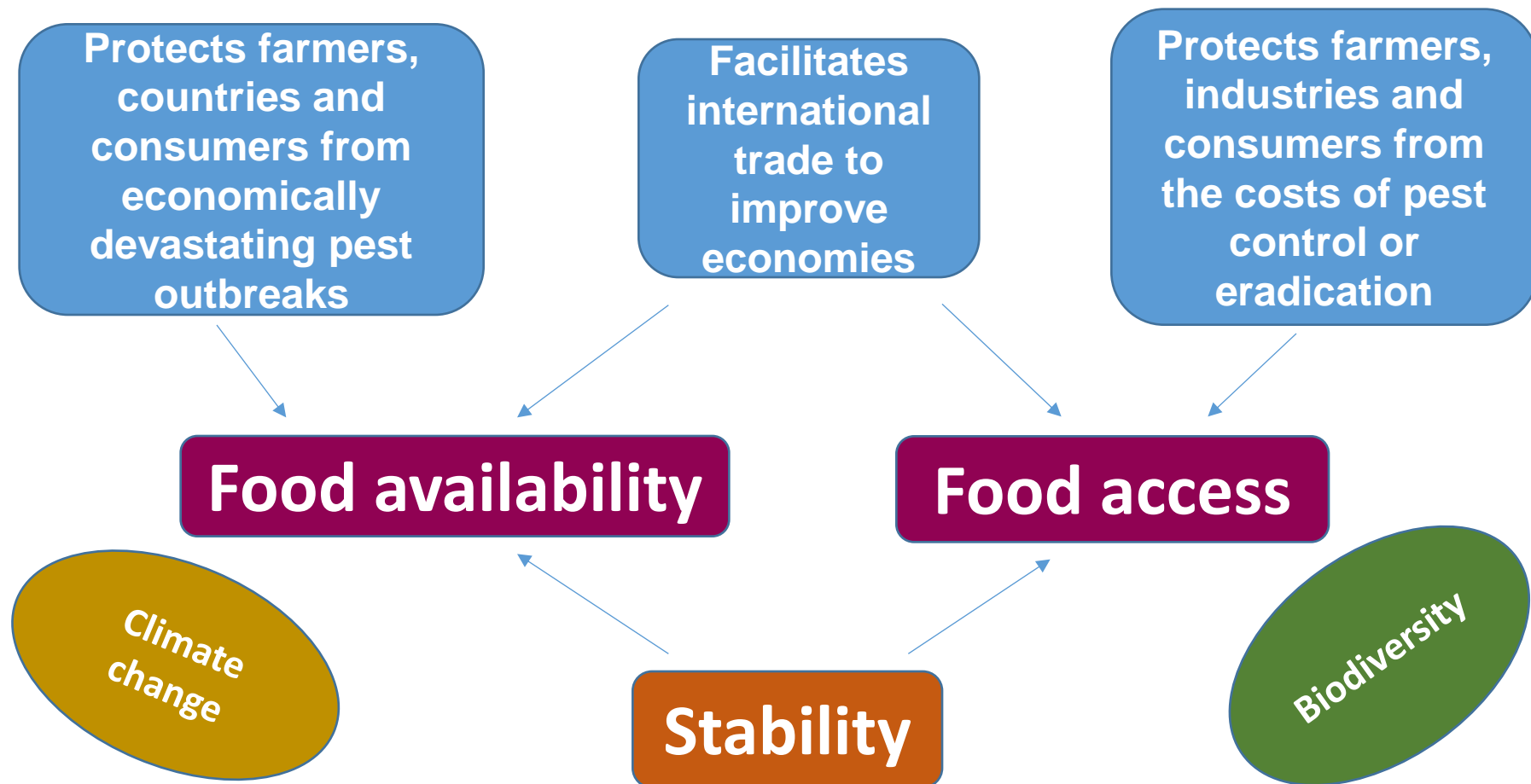
Definition of food security

“Food Security exists when all people, at all times, have physical, [social] and economic access to sufficient, safe and nutritious food to meet their dietary needs and food preferences for an active and healthy life”

(The World Food Summit, 1996 and 2002)



By helping to prevent the entry and spread of plant pests into a country, the IPPC contributes to food security as it...



CPM Standards Committee



SC November 2015 meeting



The image is a dense collage of various wooden pallets and their identification labels. The labels are from different countries and companies, including NL, AU, CN, TH, SG, AU, TR, NZ, FR, ES, LB, LV, IN, QA, CZ, GB, and DE. Each label typically features a stylized logo of a pallet and some alphanumeric code. In the center, there is a semi-transparent white box with the text 'Thank you!' in a large, bold, black font. The background shows stacks of pallets in a warehouse setting, with some pallets having labels like 'CN-076 HT-37', 'SG-07 MB-D8', 'AU-309 HT', 'TR-183 HT', 'NZ-068 HT', 'FR-AU-00808 HT', 'ES-26 0002 HT DB RENFE 022-0-01', 'LB-004 HT', 'LV-003 HT', 'IN-245 HT', 'QA-002 HT', 'CZ-041 HT DB 290-7-11', 'GB-FC833 HT', and 'DE-H 49303 HT'. There are also some labels with 'HT' and 'DB' codes, and one with 'WC LE'.